

The Worcestershire Local Nature Recovery Strategy (LNRS): quick guide

Local Nature Recovery Strategies are a new type of spatial strategy for nature conservation action, introduced by the Environment Act 2021. 48 LNRS's across England will set out local priorities to restore and enhance habitats and recover populations of species.

The strategy is accompanied by a Local Habitat Map, which shows existing areas of particular importance for biodiversity and where the best gains for nature can be achieved if the suggested Potential Measures for nature recovery are delivered.

- ➔ The Local Nature Recovery Strategy sets out **what** the priority habitats, species and environmental issues are for Worcestershire.
- ➔ The Local Habitat Map translates this into **where** the biggest gains for nature can be delivered on the ground if the 'Potential Measures' suggested in the strategy are carried out.



Why do we need a Local Nature Recovery Strategy?

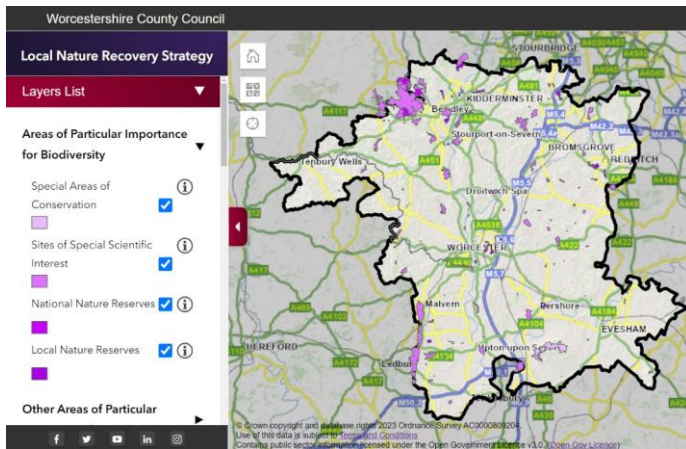
Great Britain is one of the most nature-depleted countries in the world, with almost 1,500 species threatened with extinction. Habitats and species are under huge pressure from threats including development, intensive land management, pollution, invasive species, pests and disease, and climate change. Nature needs collective, concerted action from us to help it recover.

Worcestershire County Council is the lead
Responsible Authority for preparation of the LNRS



What areas are already important for nature?

Some special sites must appear on the Local Habitat Map by law. These are places already of high importance for nature conservation: the core sites within our existing nature recovery network. They include legally protected sites such as Sites of Special Scientific Interest, and locally designated sites such as Local Wildlife Sites.



How to get involved

The draft Local Nature Recovery Strategy and draft Local Habitat Map will be taken through a public consultation in 2025.

Have your say on nature recovery: www.worcestershire.gov.uk/lhrs

What 'Potential Measures' for nature recovery can I help with?

Everyone has a role to play in helping nature recover. The Local Habitat Map will suggest Potential Measures for nature recovery and the best locations to deliver them:

- 1. Site-based Potential Measures** are activities suggested for delivery on a specific site where important habitats or species may already exist.
- 2. Landscape-scale Potential Measures** are activities suggested for delivery across a wider defined area, such as the catchment of a particular watercourse.
- 3. Non-mapped Potential Measures** do not appear on the Local Habitat Map. These are activities that would be beneficial for nature anywhere within Worcestershire. They may also be supporting activities that don't involve 'on the ground' nature conservation work.

Contact the LNRS preparation team:

lnrs@worcestershire.gov.uk
www.worcestershire.gov.uk/lnrs

Sign up for 'Environmental Policy' consultation updates (including LNRS) on:
www.worcestershire.gov.uk/council-services/planning-and-developments/get-involved-planning