



# VALE OF EVESHAM ADVISORY LORRY ROUTE MAP

**Vale of Evesham Advisory Lorry Route Map**  
 The map illustrates the best available routes for heavy goods vehicles in the Vale of Evesham. The map indicates industrial and trading estates within the Vale with their points of local access.

**Good practice**  
 Lorry Operators, by encouraging drivers to use the routes indicated, could avoid environmentally sensitive areas and the conflict with local residents

**Know your Vehicle height and width!**  
 The map shows bridges on the lorry route network where the safe clearance is restricted partially or wholly to be 16'3" (4.95 metres) or less.

**If your height is greater than 16'3" (4.95 metres) and if you cannot lower your load you must check out your route with the relevant highway authorities. Contact:**  
 Kier on behalf of the Highways England (motorways and trunk roads only) - Tel: 0330 0412614  
 For all other roads in Worcestershire contact Worcestershire County Council Tel: (01905) 763763  
 For all other roads in Gloucestershire contact Gloucestershire County Council Tel: (01452) 425000 Email: structures@gloucestershire.gov.uk  
 For all other roads in Warwickshire contact Warwickshire County Council Tel: (01926) 410410 Email: tpu@warwickshire.gov.uk

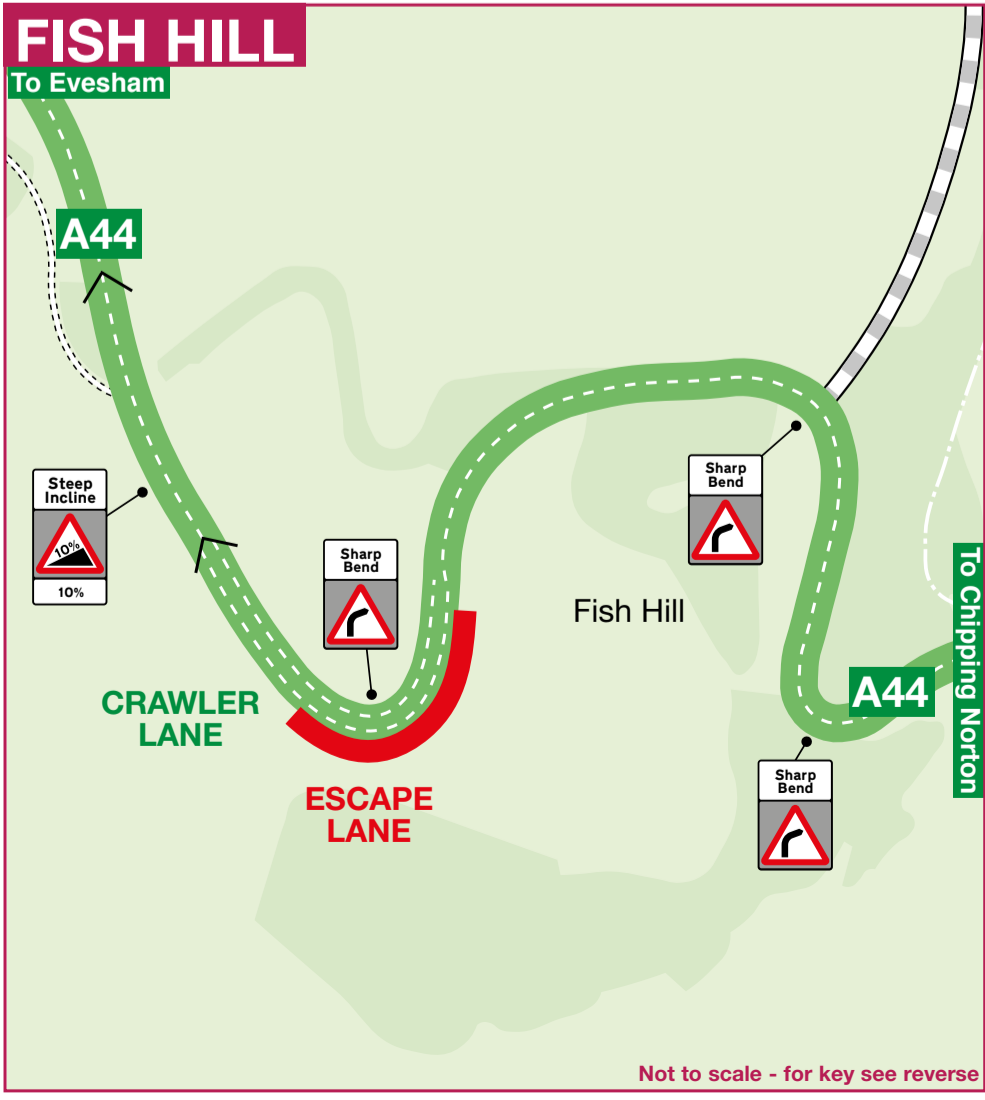
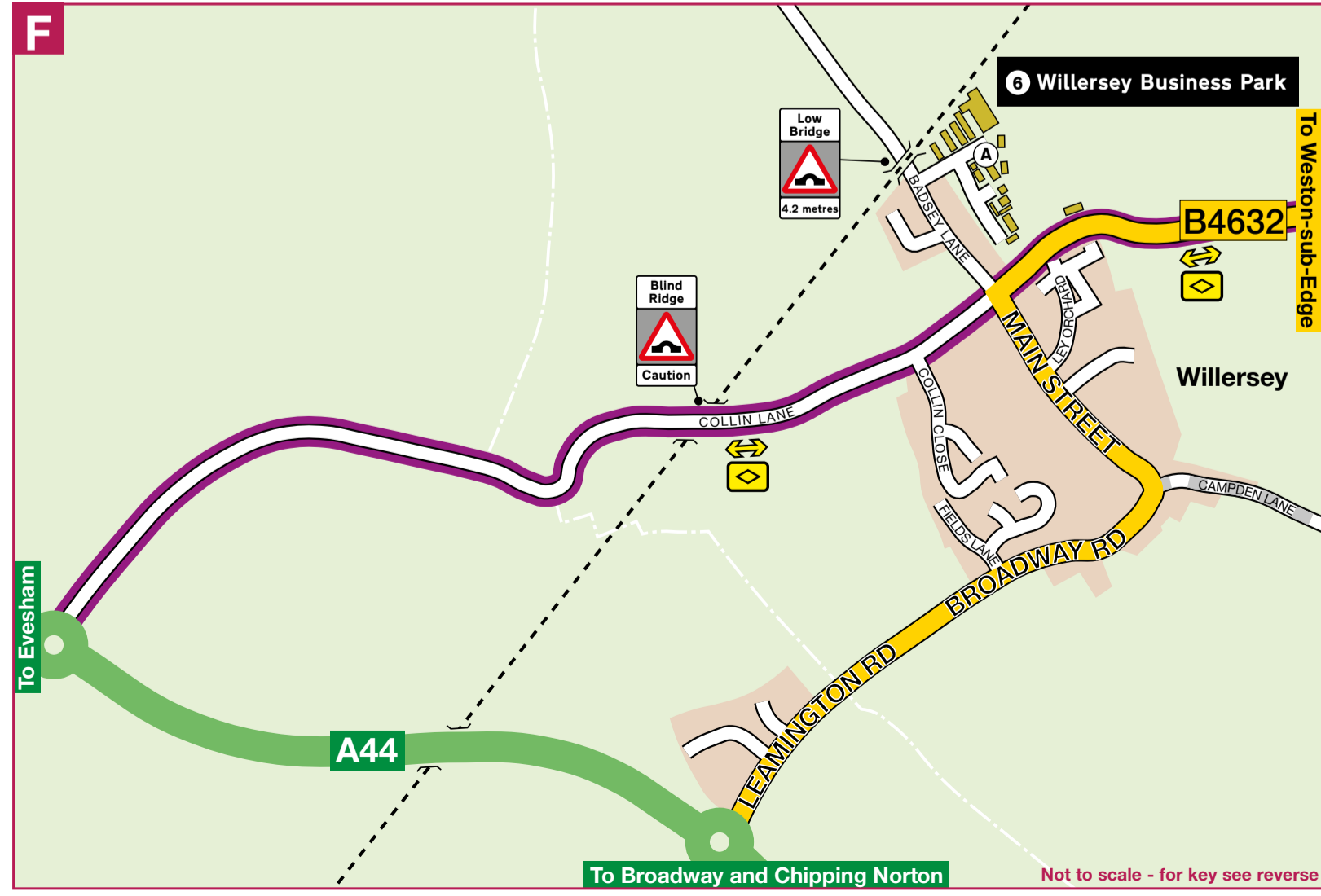
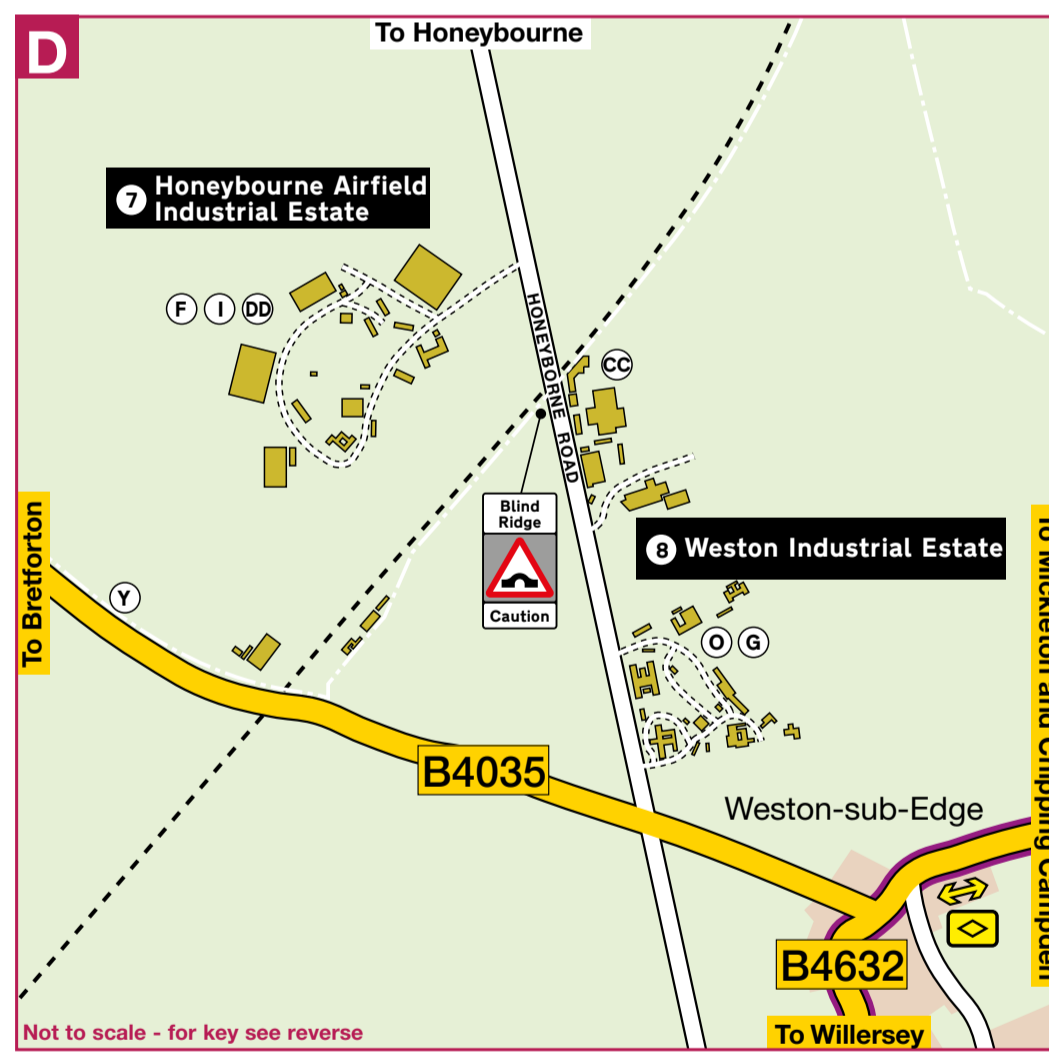
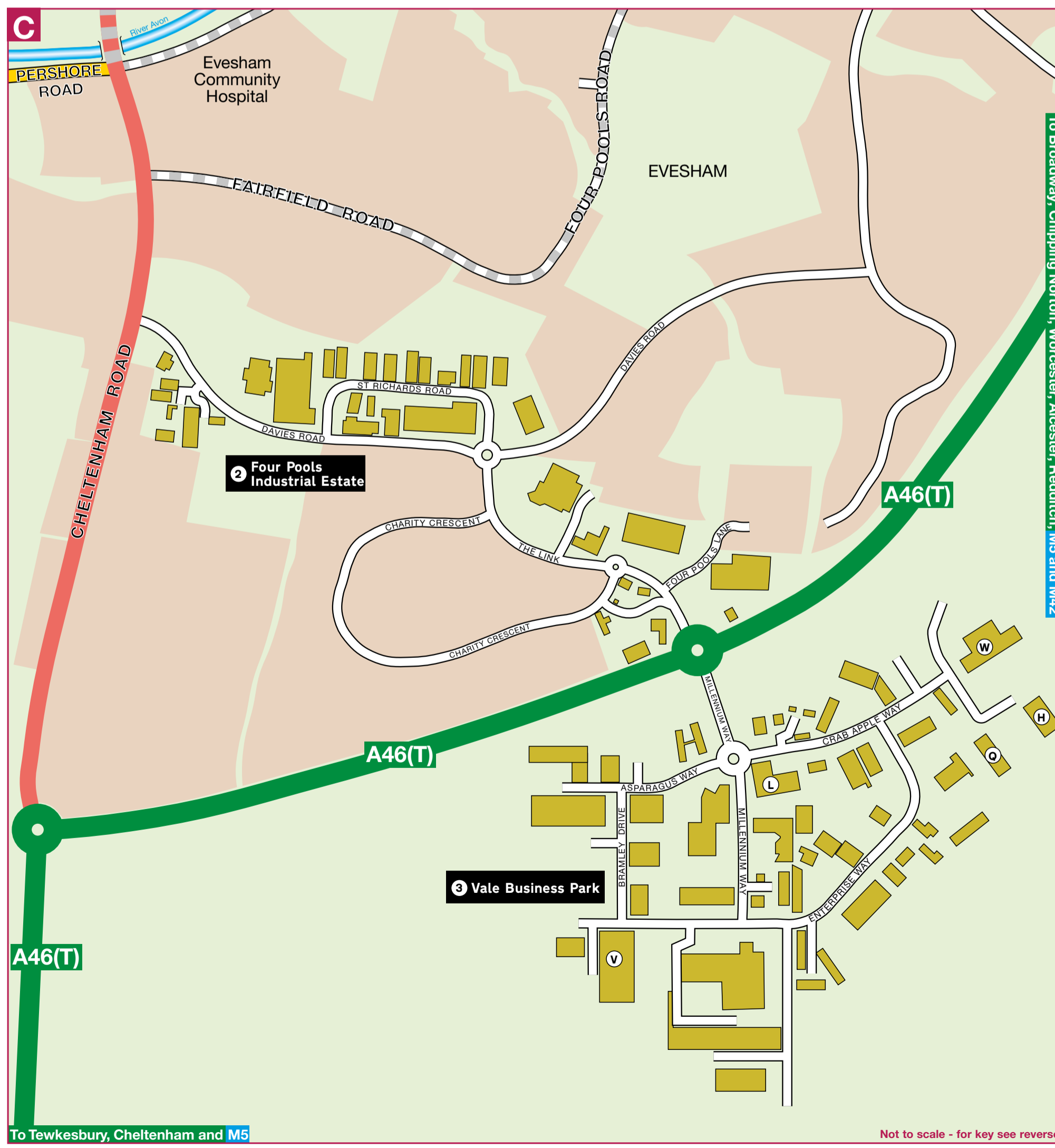
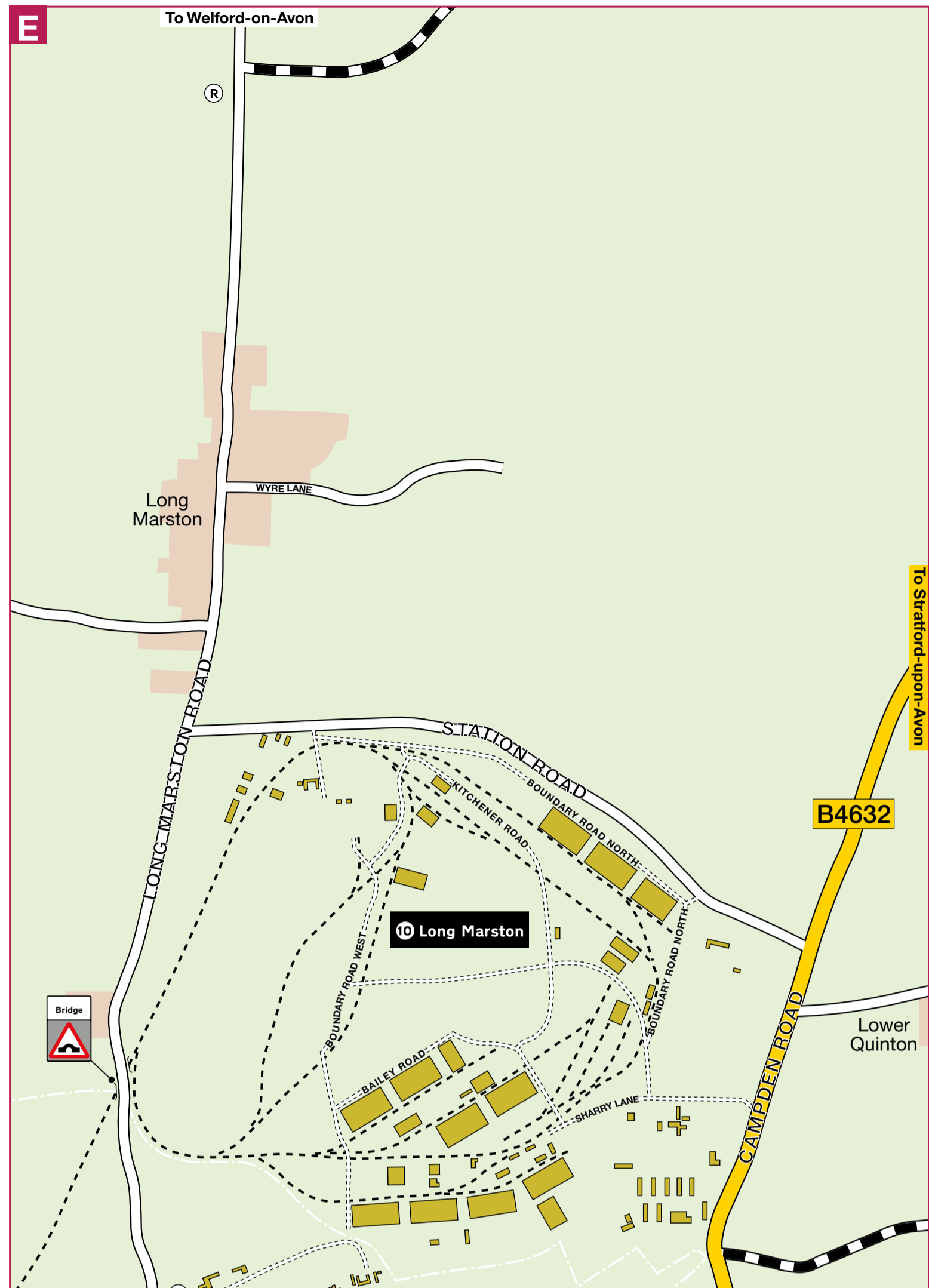
For abnormally wide loads (of equal to or greater than 13'6" (4.1 metres) for non-motorway use and 15'1" (4.6 metres) for motorways), please contact the local police authority, allowing at least 2 clear working days notice.

**For Worcestershire:** West Mercia Constabulary on 0300 333 3000  
**For Gloucestershire:** Gloucestershire Constabulary on (01452) 726920  
**For Warwickshire:** Warwickshire Police abnormal loads department on (01926) 415000

**Traffic Reports**  
 For Countywide traffic reports please tune into:  
**For Worcestershire**  
 BBC Hereford and Worcester on 104, 104.4, 104.6 & 94.7FM, or Wyvern FM on 97.6FM and 102.8FM  
**For Gloucestershire**  
 BBC Radio Gloucestershire on 95, 95.8, 104.7FM & 1413MW, or Severn Sound on 102.4FM  
**For Warwickshire**  
 BBC CWR on 94.8, 103.7 & 104FM or Mercia FM on 97.0FM and 102.9FM  
 Please note, other stations are available for more local traffic reports.

**Map Distribution**  
 This map is distributed through the FTA, RHA and other selected outlets. The assistance of all who have contributed to this is gratefully acknowledged.

If you would like to make any comments on this map then please contact:  
 Traffic Engineering Team, Worcestershire County Council, County Hall, Spetchley Road, Worcester WR5 2NP  
 Tel: 01905 763763 Email: trafficengineeringteam@worcestershire.gov.uk



Produced in Partnership with:

Worcestershire, Gloucestershire & Warwickshire County Councils have produced this map in order to assist lorry drivers in the Vale of Evesham. Whilst every care has been taken to ensure that all information is correct, none of the authorities can accept any liability for the accuracy of the information. The County Councils would be grateful to be informed of any inaccuracies which do occur so they may be rectified in future editions. The map was compiled with the kind assistance of the Vale Of Evesham Freight Quality Partnership.

Produced by Pindar Creative www.pindarcreative.co.uk

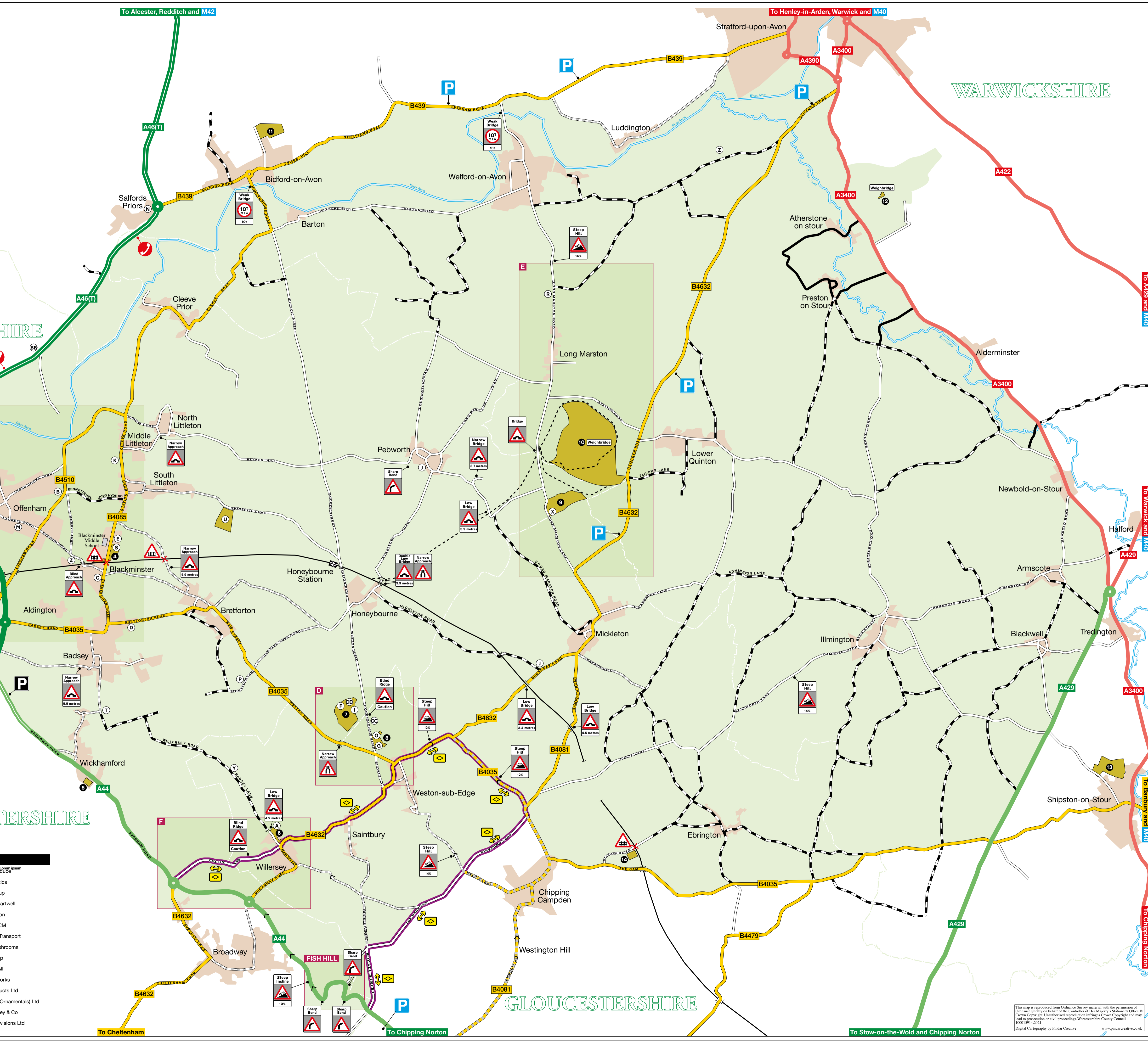
# Advisory Lorry Route Map

- Dual Carriageway/Lorry Route (Trunk)**  
Route à quatre voies/ligne à camions (nationale)  
Doppelte Fahrbahn/Lastwagenroute (Fernverkehrsstraße)  
Carretera de dos carriles/Ruta para camiones (carretera nacional)  
Strada a doppia corsia/Strada camionabile (la grande circolazione)  
Droga szybkiego ruchu/Droga dla pojazdów ci'arowych (główna)
- Dual Carriageway/Lorry Route**  
Route à quatre voies/ligne à camions  
Doppelte Fahrbahn/Lastwagenroute  
Carretera de dos carriles/Ruta para camiones  
Strada a doppia corsia/Strada camionabile  
Droga szybkiego ruchu/Droga dla pojazdów ci'arowych
- Lorry Route (Non-primary)**  
Itinéraire poids lourds (nationale non principale)  
LKW-route (Keine Fernstraße)  
Ruta de camiones (carretera A no primaria)  
Strada extraurbana non principale  
Droga dla ci'arówek (drugorzędna droga główna)
- Secondary Access Route**  
Route d'accès secondaire  
Nebenstraße  
Carretera de acceso secundaria  
Strada ad accesso secondario  
Droga drugorzędna, wyjazd wjazdowa
- Other Road**  
Autre route  
Sonstige Straße  
Otra carretera  
Altra strada  
Inna droga
- Road - 7.5t Weight Restriction**  
Route à restriction 7.5 t  
Straße - 7.5t Gewichtbeschränkung  
Carretera - Límite de peso 7.5 t  
Strada - Transito vietato ai veicoli con peso superiore a 7.5 t  
Droga dla pojazdów o wadze do 7.5 t
- Not Recommended by the Vale Of Evesham FQP as suitable for HGVs**  
Route désconseillée pour le trafic route (Vale of Evesham FQP)  
Gemäss Vale Of Evesham FQP nicht für LKws geeignet  
El FQP del Vale Of Evesham no recomienda esta ruta para vehículos pesados  
Non raccomandata per il transito dei mezzi pesanti dall'ente per la qualità del trasporto merci (Vale Of Evesham FQP)  
Niezalecana przez Partnerstwo dla Jakości Transportu Vale of Evesham dla ci'kich pojazdów ci'arowych
- Considered inaccessible for HGVs by the Vale of Evesham FQP**  
Route considérée comme inaccessible pour le trafic lourd par les autorités de Vale of Evesham FQP  
Route von der Vale of Evesham FQP als unzugänglich für LKws erachtet  
El FQP del Vale Of Evesham considera esta ruta inaccesible para vehículos pesados.  
Considerata inagibile per i mezzi pesanti dall'ente per la qualità del trasporto merci (Vale Of Evesham FQP)  
Uznana za niedostępną dla ci'kich pojazdów ci'arowych przez Partnerstwo dla Jakości Transportu Vale of Evesham
- Signed 'Fish Hill Diversionary Route'**  
Marqué 'Déviation pour Fish Hill'  
Schild 'Umleitung Fish Hill'  
Señalado 'Ruta de desvío de Fish Hill'  
Segnalato 'Itinerario diversivo Fish Hill'  
Znak 'Fish Hill - objazd'
- Industrial/Trading Estate**  
Zone industrielle/commerciale  
Industrie-/Gewerbegebiet  
Parque industrial/comercial  
Zona industriale / commerciale  
Osłazie przemysłowe/handlowe
- Urban Area/Small Town**  
Agglomération/petite ville  
Stadtgebiet/KleinStadt  
Area Urbana/Pueblo  
Area urbana / Piccolo centro  
Osłazie mieszkaniowe
- Navigable Waterway**  
Voie d'eau navigable  
Beschiffbarer Wasserweg  
Rio navegable  
Canale navigabile  
Transportowa droga wodna
- Rail Line and Station**  
Voie ferrée et gare  
Eisenbahnschienen und Bahnhof  
Via y estación de ferrocarril  
Linia o stacja kolejowa  
Tory i stacja kolejowa
- Disused Rail line**  
Voie ferrée désaffectée  
Stillgelegte Eisenbahnstrecke  
Línea de ferrocarril en desuso  
Bilico in disuso  
Nieuwlywana kolejowa
- Weighbridge**  
Pont-bascule  
Brückenwaage  
Punte levadizo  
Punte ferroviario  
Waga most
- Layby Parking and Emergency Telephone**  
Aire de stationnement et poste d'appel d'urgence  
Rastplatz mit Notfall-Telefon  
Area de estacionamiento con teléfono de emergencia  
Area di sosta con parcheggio e telefono di emergenza  
Parking i telefon awaryjny
- Layby Parking**  
Aire de stationnement  
Autobahn-Parplatz  
Area de estacionamiento con aparcamiento  
Area di sosta con parcheggio  
Zatoczka do parkowania
- Lorry Park**  
Parking poids lourds  
Lastwagenpark  
Aparcamiento para camiones  
Parcheggio autocarri  
Parking dla ciężarówek
- Level Crossing**  
Passage à niveau  
Nivåübergang  
Traversa Liana  
Passaggio a livello  
Przejazd kolejowy
- Steep Incline and direction (Top/Bottom)**  
Pente et sens de la montée (Sommet) Au Bas  
Starke Gefälle und Richtungsänderung (Oben) Unten  
Inclinaciones y dirección empinadas (Superior) Inferior  
Pendenza pericolosa in DISCESA  
Niebezpieczny zjazd (Góra) Dół
- Weak Bridge**  
Pont fragile  
Gering belastbare Brücke  
Punte debl  
Ponte debole  
Słaby most
- Bridge (with note)**  
Pont - note  
Brücke (mit Hinweis)  
Punte (con avviso)  
Ponte (con nota)  
Most (z dodatkowym oznakowaniem)
- Bridge - Narrow Approach**  
Pont - voie d'accès étroite  
Brücke - enge Zufahrt  
Punte - estrecha vía de acces  
Ponticchio - entrata stretta  
Most - wąski przejazd
- Sharp Bend**  
Virage serré  
Curva cerrada  
Scharfe Kurve  
Curva a gomito  
Ostry zakręt

Industrial Areas in the Vale	Map reference on reverse
1 Briar Close Business Park	A
2 Four Pools Industrial Estate	A
3 Vale Business Park	C
4 The Littletons and Blackminster	B
5 Bond Industrial Estate	-
6 Willersey Industrial Estate	F
7 Honeybourne Airfield Industrial Estate	D
8 Weston Industrial Estate	D
9 Marston Grange	E
10 Long Marston	E
11 Waterloo/Bidavon	-
12 Atherstone on Stour	-
13 Darlingscot	-
14 Chipping Campden Business Park	-

Generators in the Vale	Map reference on reverse
A Auto Sleepers Ltd	P
B J & J Bannister (Evesham) Ltd	O
C CBG Transport	R
D Dave Nicholls	S
E Evesham Vale Growers	T
F Superior Freight Limited	U
G George Wilcox Granite Ltd	V
H Eurofresh	W
I IDS Transport	X
J Barry Jeffrey	Y
K Kanes Foods	Z
L BHGS	AA
M Val Fresco Ltd	BB
N Bomford Turner Ltd	CC
O Organic Farm Foods Ltd	DD
P Planet Produce	-
Q AIM Logistics	-
R Reids Group	-
S Spiers & Hartwell	-
T RTB Traction	-
U Unipart DCM	-
V R Sinclair Transport	-
W Walsh Mushrooms	-
X Sims Group	-
Y Fresh for All	-
Z Sewage Works	-
AA Even Products Ltd	-
BB Mill Farm (Ornamentals) Ltd	-
CC W. L. Dingley & Co	-
DD Knight Provisions Ltd	-



This map is reproduced from Ordnance Survey material with the permission of Ordnance Survey on behalf of the Controller of Her Majesty's Stationery Office in Crown Copyright. Unauthorised reproduction infringes Crown Copyright and may lead to prosecution or civil proceedings. © Ordnance Survey 2011. Digital Cartography by Pindar Creative