

Appendix #

Sufficiency of Nursery Education Funded provision for eligible 0- to 4-year-olds by age bracket and district Summer Term 2024

Education Sufficiency & Place Planning
Worcestershire County Council

Status: Final draft v1.0

Date: 19th September 2024

Document Location: (Web address)

Contact: spp@worcestershire.gov.uk

Contents

Definitions	2	Redditch District Profile	11
Sources	2	Worcester District Profile	15
Bromsgrove District Profile	3	Wychavon District Profile	19
Malvern Hills District Profile	7	Wyre Forest District Profile	23

Definitions

School Run:	Early Years provision operated by a school including Academy, Free, LA Maintained, and Independent Schools.
Childminder:	Early Years provision delivered by a registered childminder.
Group Based:	Early Years provision delivered by private, independent and voluntary organisations.
Insufficient:	The estimated supply of funded early years provision is less than the estimated demand for funded early years provision.
Sufficient:	The estimated supply of funded early years provision is greater than the estimated demand for funded early years provision.
Within local community:	Supply and demand takes into account levels within surrounding wards.
Low Income Families:	Families in low income Before Housing Costs in the reference year (2023). A family must have claimed Child Benefit and at least one other household benefit (Universal Credit, tax credits, or Housing Benefit) at any point in the year to be classed as low income.

Sources

Population data from NOMIS website www.nomisweb.co.uk - Population estimates - local authority based by single year of age – accessed 15/08/2024
Deprivation data from [Worcestershire Joint Strategic Needs Assessment Summary 2023](#)- Children in Poverty - Relative and Absolute (p.47)

Bromsgrove District

Bromsgrove is a district of Worcestershire located in the northeast of the county.

The district borders the counties of West Midlands Unitary Authority to the north, Warwickshire to the east, Redditch District to the southeast, Wyre Forest District to the west, and Wychavon District to the Southwest.

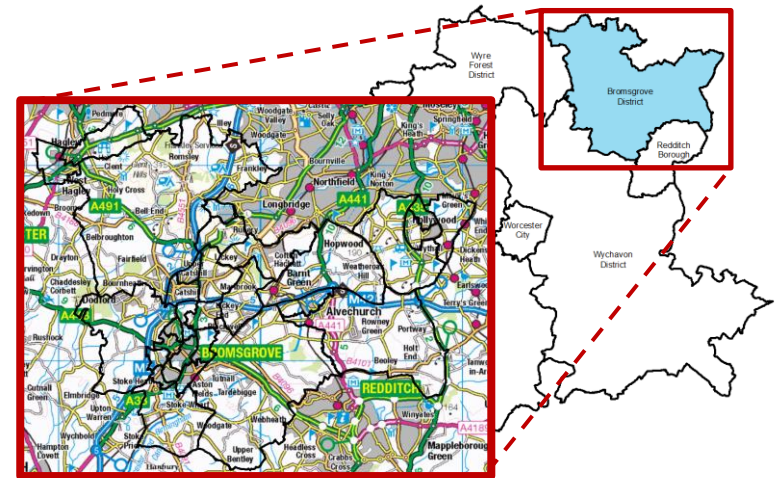
The district has four main towns, Bromsgrove, Hagley, Rubery and Wythall.

Bromsgrove is made up of thirty wards, with the largest wards covering the rural areas of the district and the smaller wards covering the town centres of Bromsgrove, Rubery, and Wythall.

Bromsgrove had a population of 103,281 mid-2023 (NOMIS, 2024). In Summer 2024 there were 3,773 known 0- to 4-year-old children living in the Bromsgrove district registered with a Worcestershire GP.

Known Children data Summer 2024

Under 2s	2-year-olds	3- to 4-year-olds
1,224	937	1,612



In 2022, 12.4% of children in Bromsgrove were living in relative low-income families (Worcestershire JSNA Summary, 2023). In the 2024 Summer Term, of the 937 2-year-olds living in the district, 17% are eligible for funded places for 2-year-old entitlement for disadvantaged children in Bromsgrove.

Within the district there are 100 Nursery Education Funded Early Years providers.

Provider Type	Total
School Run	17
Childminder	42
Group-based	41
Total	100

Bromsgrove – Sufficiency of funded provision for under 2-year-olds

Sufficiency within each ward

Ward Name	Sufficiency	Ward Name	Sufficiency
Alvechurch South	Sufficient	Hollywood	Insufficient
Alvechurch Village	Insufficient	Lickey Hills	Insufficient
Aston Fields	Sufficient	Lowes Hill	Sufficient
Avoncroft	Insufficient	Marlbrook	Sufficient
Barnt Green and Hopwood	Sufficient	Norton	Insufficient
Belbroughton and Romsley	Sufficient	Perryfields	Sufficient
Bromsgrove Central	Sufficient	Rock Hill	Insufficient
Catshill North	Insufficient	Rubery North	Sufficient
Catshill South	Insufficient	Rubery South	Sufficient
Charford	Insufficient	Sanders Park	Insufficient
Cofton	Sufficient	Sidemoor	Sufficient
Drakes Cross	Insufficient	Slideslow	Sufficient
Hagley East	Sufficient	Tardebigge	Sufficient
Hagley West	Sufficient	Wythall East	Sufficient
Hill Top	Insufficient	Wythall West	Sufficient

Sufficiency within the local community

Ward Name	Sufficiency	Ward Name	Sufficiency
Alvechurch South	Sufficient	Hollywood	Sufficient
Alvechurch Village	Sufficient	Lickey Hills	Sufficient
Aston Fields	Sufficient	Lowes Hill	Sufficient
Avoncroft	Sufficient	Marlbrook	Sufficient
Barnt Green and Hopwood	Sufficient	Norton	Sufficient
Belbroughton and Romsley	Sufficient	Perryfields	Sufficient
Bromsgrove Central	Sufficient	Rock Hill	Sufficient
Catshill North	Sufficient	Rubery North	Sufficient
Catshill South	Sufficient	Rubery South	Sufficient
Charford	Sufficient	Sanders Park	Sufficient
Cofton	Sufficient	Sidemoor	Sufficient
Drakes Cross	Sufficient	Slideslow	Sufficient
Hagley East	Sufficient	Tardebigge	Sufficient
Hagley West	Sufficient	Wythall East	Sufficient
Hill Top	Sufficient	Wythall West	Sufficient

Bromsgrove – Sufficiency of funded provision for 2-year-olds

Sufficiency within each ward

Ward Name	Sufficiency	Ward Name	Sufficiency
Alvechurch South	Sufficient	Hollywood	Insufficient
Alvechurch Village	Insufficient	Lickey Hills	Insufficient
Aston Fields	Sufficient	Lowes Hill	Sufficient
Avoncroft	Sufficient	Marlbrook	Sufficient
Barnt Green and Hopwood	Sufficient	Norton	Insufficient
Belbroughton and Romsley	Sufficient	Perryfields	Sufficient
Bromsgrove Central	Sufficient	Rock Hill	Insufficient
Catshill North	Sufficient	Rubery North	Sufficient
Catshill South	Insufficient	Rubery South	Sufficient
Charford	Sufficient	Sanders Park	Sufficient
Cofton	Sufficient	Sidemoor	Sufficient
Drakes Cross	Insufficient	Slideslow	Sufficient
Hagley East	Sufficient	Tardebigge	Sufficient
Hagley West	Sufficient	Wythall East	Sufficient
Hill Top	Insufficient	Wythall West	Sufficient

Sufficiency within the local community

Ward Name	Sufficiency	Ward Name	Sufficiency
Alvechurch South	Sufficient	Hollywood	Sufficient
Alvechurch Village	Sufficient	Lickey Hills	Sufficient
Aston Fields	Sufficient	Lowes Hill	Sufficient
Avoncroft	Sufficient	Marlbrook	Sufficient
Barnt Green and Hopwood	Sufficient	Norton	Sufficient
Belbroughton and Romsley	Sufficient	Perryfields	Sufficient
Bromsgrove Central	Sufficient	Rock Hill	Sufficient
Catshill North	Sufficient	Rubery North	Sufficient
Catshill South	Sufficient	Rubery South	Sufficient
Charford	Sufficient	Sanders Park	Sufficient
Cofton	Sufficient	Sidemoor	Sufficient
Drakes Cross	Sufficient	Slideslow	Sufficient
Hagley East	Sufficient	Tardebigge	Sufficient
Hagley West	Sufficient	Wythall East	Sufficient
Hill Top	Sufficient	Wythall West	Sufficient

Bromsgrove – Sufficiency of funded provision for 3- to 4-year-olds

Sufficiency within each ward

Ward Name	Sufficiency	Ward Name	Sufficiency
Alvechurch South	Sufficient	Hollywood	Insufficient
Alvechurch Village	Insufficient	Lickey Hills	Insufficient
Aston Fields	Sufficient	Lowes Hill	Sufficient
Avoncroft	Sufficient	Marlbrook	Sufficient
Barnt Green and Hopwood	Sufficient	Norton	Insufficient
Belbroughton and Romsley	Sufficient	Perryfields	Sufficient
Bromsgrove Central	Sufficient	Rock Hill	Insufficient
Catshill North	Insufficient	Rubery North	Sufficient
Catshill South	Insufficient	Rubery South	Sufficient
Charford	Sufficient	Sanders Park	Insufficient
Cofton	Sufficient	Sidemoor	Sufficient
Drakes Cross	Sufficient	Slideslow	Insufficient
Hagley East	Sufficient	Tardebigge	Sufficient
Hagley West	Insufficient	Wythall East	Sufficient
Hill Top	Insufficient	Wythall West	Sufficient

Sufficiency within the local community

Ward Name	Sufficiency	Ward Name	Sufficiency
Alvechurch South	Sufficient	Hollywood	Sufficient
Alvechurch Village	Sufficient	Lickey Hills	Sufficient
Aston Fields	Sufficient	Lowes Hill	Sufficient
Avoncroft	Sufficient	Marlbrook	Sufficient
Barnt Green and Hopwood	Sufficient	Norton	Sufficient
Belbroughton and Romsley	Sufficient	Perryfields	Sufficient
Bromsgrove Central	Sufficient	Rock Hill	Sufficient
Catshill North	Sufficient	Rubery North	Sufficient
Catshill South	Sufficient	Rubery South	Sufficient
Charford	Sufficient	Sanders Park	Sufficient
Cofton	Sufficient	Sidemoor	Sufficient
Drakes Cross	Sufficient	Slideslow	Sufficient
Hagley East	Sufficient	Tardebigge	Sufficient
Hagley West	Sufficient	Wythall East	Sufficient
Hill Top	Sufficient	Wythall West	Sufficient

Malvern Hills District

Malvern Hills is a district of Worcestershire located in the west of the county.

The district borders the counties of Shropshire to the north, Herefordshire to the west, and Gloucestershire to the south, with Wychavon and Worcester Districts bordering to the East, and Wyre Forest sharing the northern most border.

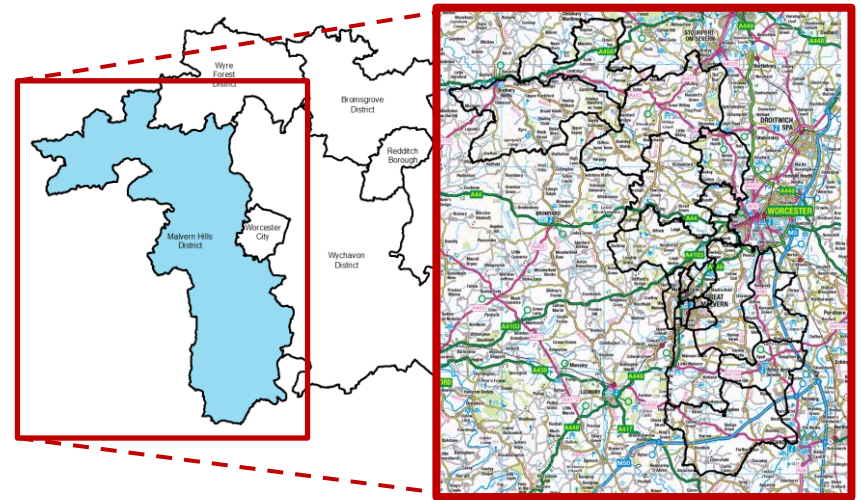
The district is largely rural and has three main towns, Malvern, Tenbury and Upton-upon-Severn.

Malvern Hills is made up of eighteen wards, with the smallest five wards covering the town centre of Malvern and the remaining twelve wards cover the large rural areas of the district.

Malvern Hills had a population of 81,894 mid-2023 (NOMIS, 2024). In Summer 2024 there were 2,414 known 0- to 4-year-old children living in the Malvern Hills district registered with a Worcestershire GP.

Known Children data Summer 2024

Under 2s	2-year-olds	3- to 4-year-olds
813	626	975



In 2022, 15.2% of children in Malvern Hills were living in relative low-income families (Worcestershire JSNA Summary, 2023). In the 2024 Summer Term, of the 626 2-year-olds living in the district, 21% are eligible for funded places for 2-year-old entitlement for disadvantaged children in Malvern Hills.

Within the district there are 61 Nursery Education Funded Early Years providers.

Provider Type	Total
School Run	18
Childminder	15
Group-based	28
Total	61

Malvern Hills – Sufficiency of funded provision for under 2-year-olds

Sufficiency within each ward

Ward Name	Sufficiency
Alfrick, Leigh & Rushwick	Sufficient
Baldwin	Sufficient
Barnards Green	Sufficient
Broadheath	Sufficient
Castlemorton, Welland and Wells	Insufficient
Great Malvern	Sufficient
Hallow and Holt	Insufficient
Kempsey	Sufficient
Lindridge	Insufficient
Link	Sufficient
Longdon	Insufficient
Martley	Insufficient
Pickersleigh	Insufficient
Powick and the Hanleys	Sufficient
Tenbury	Insufficient
Upper Howsell	Insufficient
Upton and Ripple	Sufficient
West	Insufficient

Sufficiency within the local community

Ward Name	Sufficiency
Alfrick, Leigh & Rushwick	Sufficient
Baldwin	Insufficient
Barnards Green	Sufficient
Broadheath	Sufficient
Castlemorton, Welland and Wells	Sufficient
Great Malvern	Sufficient
Hallow and Holt	Sufficient
Kempsey	Sufficient
Lindridge	Insufficient
Link	Sufficient
Longdon	Sufficient
Martley	Sufficient
Pickersleigh	Sufficient
Powick and The Hanleys	Sufficient
Tenbury	Sufficient
Upper Howsell	Sufficient
Upton and Ripple	Sufficient
West	Sufficient

Malvern Hills – Sufficiency of funded provision for 2-year-olds

Sufficiency within each ward

Ward Name	Sufficiency
Alfrick, Leigh & Rushwick	Sufficient
Baldwin	Sufficient
Barnards Green	Sufficient
Broadheath	Sufficient
Castlemorton, Welland and Wells	Sufficient
Great Malvern	Sufficient
Hallow and Holt	Sufficient
Kempsey	Sufficient
Lindridge	Sufficient
Link	Sufficient
Longdon	Insufficient
Martley	Sufficient
Pickersleigh	Insufficient
Powick and the Hanleys	Sufficient
Tenbury	Sufficient
Upper Howsell	Sufficient
Upton and Ripple	Sufficient
West	Insufficient

Sufficiency within the local community

Ward Name	Sufficiency
Alfrick, Leigh & Rushwick	Sufficient
Baldwin	Sufficient
Barnards Green	Sufficient
Broadheath	Sufficient
Castlemorton, Welland and Wells	Sufficient
Great Malvern	Sufficient
Hallow and Holt	Sufficient
Kempsey	Sufficient
Lindridge	Sufficient
Link	Sufficient
Longdon	Sufficient
Martley	Sufficient
Pickersleigh	Sufficient
Powick and The Hanleys	Sufficient
Tenbury	Sufficient
Upper Howsell	Sufficient
Upton and Ripple	Sufficient
West	Sufficient

Malvern Hills – Sufficiency of funded provision for 3- to 4-year-olds

Sufficiency within each ward

Ward Name	Sufficiency
Alfrick, Leigh & Rushwick	Sufficient
Baldwin	Sufficient
Barnards Green	Sufficient
Broadheath	Sufficient
Castlemorton, Welland and Wells	Sufficient
Great Malvern	Sufficient
Hallow and Holt	Sufficient
Kempsey	Sufficient
Lindridge	Sufficient
Link	Sufficient
Longdon	Insufficient
Martley	Sufficient
Pickersleigh	Insufficient
Powick and the Hanleys	Sufficient
Tenbury	Insufficient
Upper Howsell	Sufficient
Upton and Ripple	Sufficient
West	Insufficient

Sufficiency within the local community

Ward Name	Sufficiency
Alfrick, Leigh & Rushwick	Sufficient
Baldwin	Sufficient
Barnards Green	Sufficient
Broadheath	Sufficient
Castlemorton, Welland and Wells	Sufficient
Great Malvern	Sufficient
Hallow and Holt	Sufficient
Kempsey	Sufficient
Lindridge	Sufficient
Link	Sufficient
Longdon	Sufficient
Martley	Sufficient
Pickersleigh	Sufficient
Powick and The Hanleys	Sufficient
Tenbury	Sufficient
Upper Howsell	Sufficient
Upton and Ripple	Sufficient
West	Sufficient

Redditch District

Redditch is a district of Worcestershire located in the east of the county.

The district borders the county of Warwickshire to the east, Bromsgrove District to the north, and Wychavon District to the south and west.

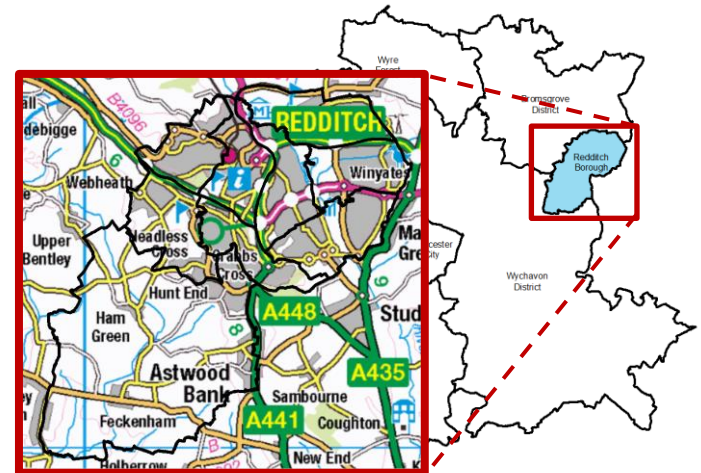
The district has one main town, Redditch, which covers the northern half of the district, with the southern half comprising mainly rural areas.

Redditch is made up of nine wards, with the eight wards breaking up the built-up areas of Redditch town, and one large ward covering the southern half of the district.

Redditch had a population of 85,209 mid-2023 (NOMIS, 2024). In Summer 2024 there were 3,828 known 0- to 4-year-old children living in the Redditch district registered with a Worcestershire GP.

Known Children data Summer 2024

Under 2s	2-year-olds	3- to 4-year-olds
1,274	1,015	1,539



In 2022, 21% of children in Redditch were living in relative low-income families (Worcestershire JSNA Summary, 2023). In the 2024 Summer Term, of the 1,015 2-year-olds living in the district, 24% are eligible for funded places for 2-year-old entitlement for disadvantaged children in Redditch.

Within the district there are 61 Nursery Education Funded Early Years providers.

Provider Type	Total
School Run	14
Childminder	20
Group-based	27
Total	61

Redditch – Sufficiency of funded provision for under 2-year-olds

Sufficiency within each ward

Ward Name	Sufficiency
Astwood Bank and Feckenham	Sufficient
Batchley and Brockhill	Sufficient
Central	Sufficient
Greenlands and Lakeside	Insufficient
Headless Cross and Oakenshaw	Sufficient
Matchborough and Woodrow	Insufficient
North	Insufficient
Webheath and Callow Hill	Sufficient
Winyates	Insufficient

Sufficiency within the local community

Ward Name	Sufficiency
Astwood Bank and Feckenham	Sufficient
Batchley and Brockhill	Sufficient
Central	Sufficient
Greenlands and Lakeside	Sufficient
Headless Cross and Oakenshaw	Sufficient
Matchborough and Woodrow	Insufficient
North	Sufficient
Webheath and Callow Hill	Sufficient
Winyates	Sufficient

Redditch – Sufficiency of funded provision for 2-year-olds

Sufficiency within each ward

Ward Name	Sufficiency
Astwood Bank and Feckenham	Sufficient
Batchley and Brockhill	Sufficient
Central	Sufficient
Greenlands and Lakeside	Insufficient
Headless Cross and Oakenshaw	Sufficient
Matchborough and Woodrow	Sufficient
North	Insufficient
Webheath and Callow Hill	Sufficient
Winyates	Sufficient

Sufficiency within the local community

Ward Name	Sufficiency
Astwood Bank and Feckenham	Sufficient
Batchley and Brockhill	Sufficient
Central	Sufficient
Greenlands and Lakeside	Sufficient
Headless Cross and Oakenshaw	Sufficient
Matchborough and Woodrow	Sufficient
North	Sufficient
Webheath and Callow Hill	Sufficient
Winyates	Sufficient

Redditch – Sufficiency of funded provision for 3- to 4-year-olds

Sufficiency within each ward

Ward Name	Sufficiency
Astwood Bank and Feckenham	Sufficient
Batchley and Brockhill	Sufficient
Central	Sufficient
Greenlands and Lakeside	Insufficient
Headless Cross and Oakenshaw	Sufficient
Matchborough and Woodrow	Insufficient
North	Insufficient
Webheath and Callow Hill	Sufficient
Winyates	Sufficient

Sufficiency within the local community

Ward Name	Sufficiency
Astwood Bank and Feckenham	Sufficient
Batchley and Brockhill	Sufficient
Central	Sufficient
Greenlands and Lakeside	Insufficient
Headless Cross and Oakenshaw	Sufficient
Matchborough and Woodrow	Insufficient
North	Insufficient
Webheath and Callow Hill	Sufficient
Winyates	Insufficient

Worcester District

Worcester is the smallest district of Worcestershire located in the centre of the county.

The district is enveloped by Malvern Hills district to the west and Wychavon district to the east.

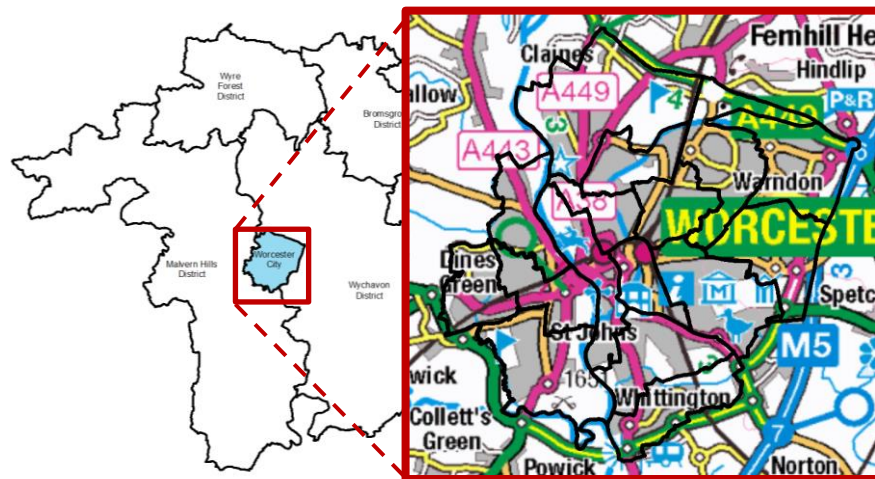
The district comprises sixteen wards which cover the built-up areas of Worcester City and its suburbs.

Worcester had a population of 102,319 mid-2023 (NOMIS,2024). In Summer 2024 there were 4,120 known 0- to 4-year-old children living in the Worcester district registered with a Worcestershire GP.

Known Children data Summer 2024

Under 2s	2-year-olds	3- to 4-year-olds
1,452	1,000	1,668

In 2022, 21.4% of children in Worcester were living in relative low-income families (Worcestershire JSNA Summary, 2023). In the 2024 Summer Term, of the 1,000 2-year-olds living in the district, 19% are eligible for funded places for 2-year-old entitlement for disadvantaged children in Worcester.



Within the district there are 68 Nursery Education Funded Early Years providers.

Number of providers by type:

Provider Type	Total
School Run	13
Childminder	32
Group-based	23
Total	68

Worcester – Sufficiency of funded provision for under 2-year-olds

Sufficiency within each ward

Ward Name	Sufficiency
Arboretum	Sufficient
Battenhall	Sufficient
Cathedral	Insufficient
Claines	Sufficient
Dines Green and Grove Farm	Insufficient
Fort Royal	Sufficient
Leopard Hill	Sufficient
Lower Wick and Pitmaston	Sufficient
Nunnery	Insufficient
Rainbow Hill	Insufficient
St Clement	Insufficient
St John's	Sufficient
St Nicholas	Sufficient
St Peter's Parish	Insufficient
St Stephen	Sufficient
Warndon and Elbury Park	Insufficient

Sufficiency within the local community

Ward Name	Sufficiency
Arboretum	Insufficient
Battenhall	Sufficient
Cathedral	Sufficient
Claines	Sufficient
Dines Green and Grove Farm	Sufficient
Fort Royal	Insufficient
Leopard Hill	Sufficient
Lower Wick and Pitmaston	Sufficient
Nunnery	Insufficient
Rainbow Hill	Insufficient
St Clement	Sufficient
St John's	Sufficient
St Nicholas	Sufficient
St Peter's Parish	Sufficient
St Stephen	Insufficient
Warndon and Elbury Park	Insufficient

Worcester – Sufficiency of funded provision for 2-year-olds

Sufficiency within each ward

Ward Name	Sufficiency
Arboretum	Sufficient
Battenhall	Sufficient
Cathedral	Sufficient
Claines	Sufficient
Dines Green and Grove Farm	Insufficient
Fort Royal	Sufficient
Leopard Hill	Sufficient
Lower Wick and Pitmaston	Sufficient
Nunnery	Insufficient
Rainbow Hill	Insufficient
St Clement	Sufficient
St John's	Sufficient
St Nicholas	Sufficient
St Peter's Parish	Insufficient
St Stephen	Sufficient
Warndon and Elbury Park	Sufficient

Sufficiency within the local community

Ward Name	Sufficiency
Arboretum	Sufficient
Battenhall	Sufficient
Cathedral	Sufficient
Claines	Sufficient
Dines Green and Grove Farm	Sufficient
Fort Royal	Sufficient
Leopard Hill	Sufficient
Lower Wick and Pitmaston	Sufficient
Nunnery	Sufficient
Rainbow Hill	Sufficient
St Clement	Sufficient
St John's	Sufficient
St Nicholas	Sufficient
St Peter's Parish	Sufficient
St Stephen	Sufficient
Warndon and Elbury Park	Sufficient

Worcester – Sufficiency of funded provision for 3- to 4-year-olds

Sufficiency within each ward

Ward Name	Sufficiency
Arboretum	Sufficient
Battenhall	Sufficient
Cathedral	Insufficient
Claines	Sufficient
Dines Green and Grove Farm	Insufficient
Fort Royal	Sufficient
Leopard Hill	Sufficient
Lower Wick and Pitmaston	Sufficient
Nunnery	Insufficient
Rainbow Hill	Insufficient
St Clement	Insufficient
St John's	Sufficient
St Nicholas	Sufficient
St Peter's Parish	Insufficient
St Stephen	Sufficient
Warndon and Elbury Park	Sufficient

Sufficiency within the local community

Ward Name	Sufficiency
Arboretum	Sufficient
Battenhall	Sufficient
Cathedral	Sufficient
Claines	Sufficient
Dines Green and Grove Farm	Sufficient
Fort Royal	Sufficient
Leopard Hill	Sufficient
Lower Wick and Pitmaston	Sufficient
Nunnery	Sufficient
Rainbow Hill	Sufficient
St Clement	Sufficient
St John's	Sufficient
St Nicholas	Sufficient
St Peter's Parish	Sufficient
St Stephen	Sufficient
Warndon and Elbury Park	Sufficient

Wychavon District

Wychavon is a district of Worcestershire and covers the larger rural areas to the east of the county.

The district borders the counties of Warwickshire to the east, and Gloucestershire to the south, Wyre Forest district to the north, Bromsgrove and Redditch to the northeast, and Malvern Hills and Worcester Districts to the west.

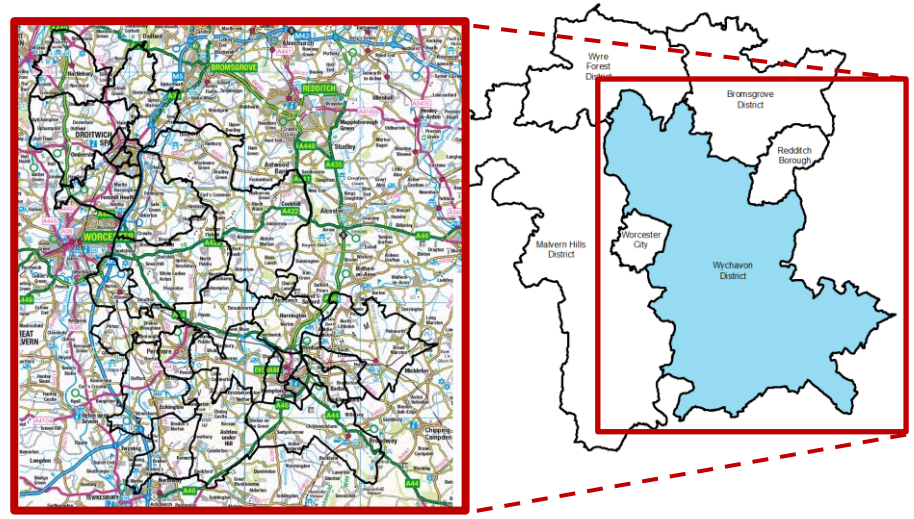
The district has three main towns, Droitwich, Pershore and Evesham.

Wychavon is made up of twenty-seven wards, with ten smaller wards covering Droitwich (four wards) and Evesham (six wards) town centres, and the remaining seventeen wards covering larger rural areas across the district.

Wychavon had a population of 137,101 mid-2023 (NOMIS, 2024). In Summer 2024 there were 4,955 known 0- to 4-year-old children living in the Wychavon district registered with a Worcestershire GP.

Known Children data Summer 2024

Under 2s	2-year-olds	3- to 4-year-olds
1,650	1,295	2,010



In 2022, 15.4% of children in Wychavon were living in relative low-income families (Worcestershire JSNA Summary, 2023). In the 2024 Summer Term, of the 1,295 2-year-olds living in the district, 20% are eligible for funded places for 2-year-old entitlement for disadvantaged children in Wychavon.

Within the district there are 100 Nursery Education Funded Early Years providers.

Provider Type	Total
School Run	31
Childminder	26
Group-based	43
Total	100

Wychavon – Sufficiency of funded provision for under 2-year-olds

Sufficiency within each ward

Ward Name	Sufficiency	Ward Name	Sufficiency
Badsey and Aldington	Insufficient	Evesham North	Insufficient
Bengeworth	Insufficient	Evesham South	Sufficient
Bowbrook	Sufficient	Fladbury	Insufficient
Bredon	Insufficient	Hampton	Sufficient
Bredon Hill	Sufficient	Hartlebury	Sufficient
Bretforton and Offenham	Insufficient	Harvington & Norton	Sufficient
Broadway, Sedgeberrow and Childswickham	Insufficient	Honeybourne, Pebworth and The Littletons	Sufficient
Dodderhill	Insufficient	Inkberrow	Sufficient
Drakes Broughton, Norton and Whittington	Insufficient	North Claines and Salwarpe	Insufficient
Droitwich East	Insufficient	Ombersley	Sufficient
Droitwich South East	Sufficient	Pershore	Sufficient
Droitwich South West	Sufficient	Pinvin	Insufficient
Droitwich West	Insufficient	Upton Snodsbury	Insufficient
Eckington	Sufficient		

Sufficiency within the local community

Ward Name	Sufficiency	Ward Name	Sufficiency
Badsey and Aldington	Insufficient	Evesham North	Insufficient
Bengeworth	Insufficient	Evesham South	Insufficient
Bowbrook	Sufficient	Fladbury	Sufficient
Bredon	Sufficient	Hampton	Sufficient
Bredon Hill	Sufficient	Hartlebury	Sufficient
Bretforton and Offenham	Insufficient	Harvington & Norton	Sufficient
Broadway, Sedgeberrow and Childswickham	Insufficient	Honeybourne, Pebworth and The Littletons	Sufficient
Dodderhill	Sufficient	Inkberrow	Sufficient
Drakes Broughton, Norton and Whittington	Sufficient	North Claines and Salwarpe	Sufficient
Droitwich East	Sufficient	Ombersley	Sufficient
Droitwich South East	Sufficient	Pershore	Sufficient
Droitwich South West	Sufficient	Pinvin	Sufficient
Droitwich West	Sufficient	Upton Snodsbury	Sufficient
Eckington	Sufficient		

Wychavon – Sufficiency of funded provision for 2-year-olds

Sufficiency within each ward

Ward Name	Sufficiency	Ward Name	Sufficiency
Badsey and Aldington	Insufficient	Evesham North	Sufficient
Bengeworth	Insufficient	Evesham South	Sufficient
Bowbrook	Sufficient	Fladbury	Sufficient
Bredon	Insufficient	Hampton	Sufficient
Bredon Hill	Sufficient	Hartlebury	Sufficient
Bretforton and Offenham	Insufficient	Harvington & Norton	Sufficient
Broadway, Sedgeberrow and Childswickham	Sufficient	Honeybourne, Pebworth and The Littletons	Sufficient
Dodderhill	Insufficient	Inkberrow	Sufficient
Drakes Broughton, Norton and Whittington	Sufficient	North Claines and Salwarpe	Sufficient
Droitwich East	Sufficient	Ombersley	Sufficient
Droitwich South East	Sufficient	Pershore	Sufficient
Droitwich South West	Sufficient	Pinvin	Insufficient
Droitwich West	Insufficient	Upton Snodsbury	Sufficient
Eckington	Sufficient		

Sufficiency within the local community

Ward Name	Sufficiency	Ward Name	Sufficiency
Badsey and Aldington	Insufficient	Evesham North	Sufficient
Bengeworth	Sufficient	Evesham South	Sufficient
Bowbrook	Sufficient	Fladbury	Sufficient
Bredon	Sufficient	Hampton	Sufficient
Bredon Hill	Sufficient	Hartlebury	Sufficient
Bretforton and Offenham	Sufficient	Harvington & Norton	Sufficient
Broadway, Sedgeberrow and Childswickham	Sufficient	Honeybourne, Pebworth and The Littletons	Sufficient
Dodderhill	Sufficient	Inkberrow	Sufficient
Drakes Broughton, Norton and Whittington	Sufficient	North Claines and Salwarpe	Sufficient
Droitwich East	Sufficient	Ombersley	Sufficient
Droitwich South East	Sufficient	Pershore	Sufficient
Droitwich South West	Sufficient	Pinvin	Sufficient
Droitwich West	Sufficient	Upton Snodsbury	Sufficient
Eckington	Sufficient		

Wychavon – Sufficiency of funded provision for 3- to 4-year-olds

Sufficiency within each ward

Ward Name	Sufficiency	Ward Name	Sufficiency
Badsey and Aldington	Insufficient	Evesham North	Sufficient
Bengeworth	Insufficient	Evesham South	Sufficient
Bowbrook	Sufficient	Fladbury	Insufficient
Bredon	Insufficient	Hampton	Sufficient
Bredon Hill	Sufficient	Hartlebury	Sufficient
Bretforton and Offenham	Insufficient	Harvington & Norton	Sufficient
Broadway, Sedgeberrow and Childswickham	Insufficient	Honeybourne, Pebworth and The Littletons	Sufficient
Dodderhill	Insufficient	Inkberrow	Sufficient
Drakes Broughton, Norton and Whittington	Insufficient	North Claines and Salwarpe	Sufficient
Droitwich East	Insufficient	Ombersley	Sufficient
Droitwich South East	Sufficient	Pershore	Sufficient
Droitwich South West	Sufficient	Pinvin	Insufficient
Droitwich West	Insufficient	Upton Snodsbury	Sufficient
Eckington	Sufficient		

Sufficiency within the local community

Ward Name	Sufficiency	Ward Name	Sufficiency
Badsey and Aldington	Insufficient	Evesham North	Sufficient
Bengeworth	Insufficient	Evesham South	Sufficient
Bowbrook	Sufficient	Fladbury	Sufficient
Bredon	Sufficient	Hampton	Sufficient
Bredon Hill	Sufficient	Hartlebury	Sufficient
Bretforton and Offenham	Insufficient	Harvington & Norton	Sufficient
Broadway, Sedgeberrow and Childswickham	Insufficient	Honeybourne, Pebworth and The Littletons	Sufficient
Dodderhill	Sufficient	Inkberrow	Sufficient
Drakes Broughton, Norton and Whittington	Sufficient	North Claines and Salwarpe	Sufficient
Droitwich East	Sufficient	Ombersley	Sufficient
Droitwich South East	Sufficient	Pershore	Sufficient
Droitwich South West	Sufficient	Pinvin	Sufficient
Droitwich West	Sufficient	Upton Snodsbury	Sufficient
Eckington	Sufficient		

Wyre Forest District

Wyre Forest is a district of Worcestershire located in the north of the county.

The district borders the counties of Staffordshire and Shropshire to the north, Bromsgrove District to the east, Wychavon District to the south, and Malvern Hills District to the South and West.

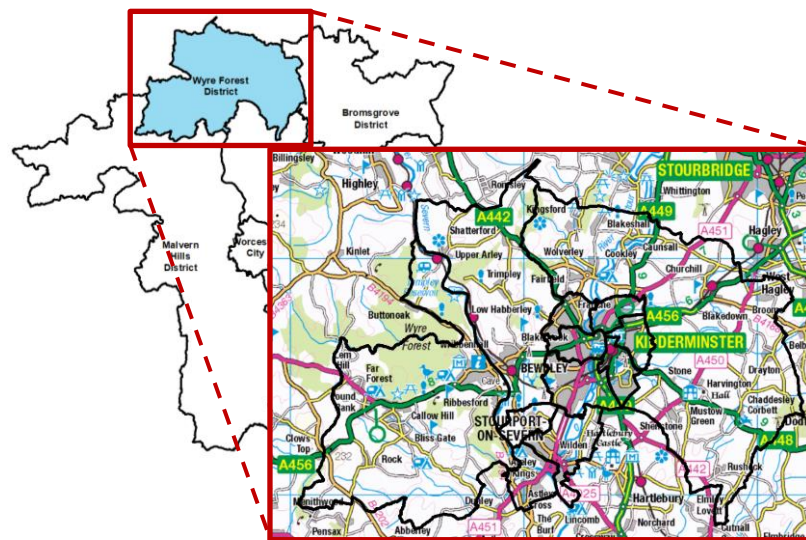
The district has three main towns, Kidderminster, Bewdley and Stourport-on-Severn.

Wyre Forest is made up of twelve wards, with the largest three wards around the periphery of the district and the remaining nine smaller wards covering the town centres of Kidderminster and Stourport.

Wyre Forest had a population of 103,872 mid-2023 (NOMIS, 2024). In Summer 2024 there were 3,507 known 0- to 4-year-old children living in the Wyre Forest district registered with a Worcestershire GP.

Known Children data Summer 2024

Under 2s	2-year-olds	3- to 4-year-olds
1,200	887	1,420



In 2022, 22.7% of children in Wyre Forest were living in relative low-income families (Worcestershire JSNA Summary, 2023). In the 2024 Summer Term, of the 887 2-year-olds living in the district, 25% are eligible for funded places for 2-year-old entitlement for disadvantaged children in Wyre Forest.

Within the district there are 74 Nursery Education Funded Early Years providers.

Provider Type	Total
School Run	26
Childminder	27
Group-based	21
Total	74

Wyre Forest – Sufficiency of funded provision for under 2-year-olds

Sufficiency within each ward

Ward Name	Sufficiency
Aggborough and Spennells	Sufficient
Arley Kings and Riverside	Sufficient
Bewdley and Rock	Insufficient
Blakebrook and Habberley South	Sufficient
Broadwaters	Sufficient
Foley Park and Hoobrook	Insufficient
Franche and Habberley North	Sufficient
Lickhill	Insufficient
Mitton	Insufficient
Offmore and Comberton	Insufficient
Wribbenhall and Arley	Insufficient
Wyre Forest Rural	Insufficient

Sufficiency within the local community

Ward Name	Sufficiency
Aggborough and Spennells	Sufficient
Arley Kings and Riverside	Insufficient
Bewdley and Rock	Insufficient
Blakebrook and Habberley South	Sufficient
Broadwaters	Sufficient
Foley Park and Hoobrook	Sufficient
Franche and Habberley North	Sufficient
Lickhill	Insufficient
Mitton	Sufficient
Offmore and Comberton	Sufficient
Wribbenhall and Arley	Insufficient
Wyre Forest Rural	Sufficient

Wyre Forest – Sufficiency of funded provision for 2-year-olds

Sufficiency within each ward

Ward Name	Sufficiency
Aggborough and Spennells	Sufficient
Arley Kings and Riverside	Sufficient
Bewdley and Rock	Sufficient
Blakebrook and Habberley South	Sufficient
Broadwaters	Sufficient
Foley Park and Hoobrook	Insufficient
Franche and Habberley North	Sufficient
Lickhill	Insufficient
Mitton	Sufficient
Offmore and Comberton	Sufficient
Wribbenhall and Arley	Insufficient
Wyre Forest Rural	Sufficient

Sufficiency within the local community

Ward Name	Sufficiency
Aggborough and Spennells	Sufficient
Arley Kings and Riverside	Sufficient
Bewdley and Rock	Sufficient
Blakebrook and Habberley South	Sufficient
Broadwaters	Sufficient
Foley Park and Hoobrook	Sufficient
Franche and Habberley North	Sufficient
Lickhill	Sufficient
Mitton	Sufficient
Offmore and Comberton	Sufficient
Wribbenhall and Arley	Sufficient
Wyre Forest Rural	Sufficient

Wyre Forest – Sufficiency of funded provision for 3- to 4-year-olds

Sufficiency within each ward

Ward Name	Sufficiency
Aggborough and Spennells	Sufficient
Arley Kings and Riverside	Sufficient
Bewdley and Rock	Insufficient
Blakebrook and Habberley South	Insufficient
Broadwaters	Sufficient
Foley Park and Hoobrook	Insufficient
Franche and Habberley North	Sufficient
Lickhill	Insufficient
Mitton	Sufficient
Offmore and Comberton	Sufficient
Wribbenhall and Arley	Insufficient
Wyre Forest Rural	Sufficient

Sufficiency within the local community

Ward Name	Sufficiency
Aggborough and Spennells	Sufficient
Arley Kings and Riverside	Sufficient
Bewdley and Rock	Sufficient
Blakebrook and Habberley South	Sufficient
Broadwaters	Sufficient
Foley Park and Hoobrook	Sufficient
Franche and Habberley North	Sufficient
Lickhill	Insufficient
Mitton	Sufficient
Offmore and Comberton	Sufficient
Wribbenhall and Arley	Sufficient
Wyre Forest Rural	Sufficient