

Order and Plan for Various Roads, Crowle

Statement of Reasons for proposing to make an Order under the Road Traffic Regulation Act 1984

WORCESTERSHIRE COUNTY COUNCIL (VARIOUS ROADS, CROWLE) (RESTRICTED ROADS) ORDER 2000 (REVOCATION) AND (VARIOUS ROADS, CROWLE) (RESTRICTED ROADS) (30 MPH SPEED LIMIT) ORDER 2024

Worcestershire County Council propose to make this Order for facilitating the safe passage on the road or any other road of any class of traffic.

It is considered that the Order will contribute to the securing of the expeditious, safe and convenient movement of all traffic (including pedestrians) and will have no adverse effect on other considerations contained in s122 Road Traffic Regulation Act 1984

THOMAS POLLOCK
Head of Commercial Law
Legal and Governance

Wildwood,
Wildwood Drive,
Worcester
WR5 2QT

The order under the Road Traffic Regulation Act 1984

WORCESTERSHIRE COUNTY COUNCIL (VARIOUS ROADS, CROWLE) (RESTRICTED ROADS) ORDER 2000 (REVOCATION) AND (VARIOUS ROADS, CROWLE) (RESTRICTED ROADS) (30 MPH SPEED LIMIT) ORDER 2024

Worcestershire County Council in exercise of their powers under Section 82, 83 and 84 of the Road Traffic Regulation Act 1984 (which said Act is hereinafter referred to as 'the Act of 1984') and Part IV of Schedule 9 to the Act of 1984 and all other powers them enabling in that behalf and after consultation with the Chief Officer of Police in accordance with Part III of Schedule 9 to the Act of 1984 hereby makes the following Order: -

1. That The County of Worcestershire (Various Roads, Crowle) (Restricted Roads) Order 2000 is hereby revoked in its entirety.
2. No person shall drive or cause or permit to be driven any motor vehicle at a speed exceeding 30 miles per hour along the lengths of roads as specified in the Schedule to this Order.
3. No speed limit imposed by this Order applies to vehicles falling within regulation 3(4) of the Road Traffic Exemptions (Special Forces) (Variation and Amendment) Regulations 2011 when used in accordance with regulation 3(5) of those regulations.
4. This Order may be cited as Worcestershire County Council (Various Road, Crowle) (Restricted Roads) Order 2000 (Revocation) and (Various Roads, Crowle) (Restricted Roads) (30 mph Speed Limit) Order 2024 and shall come into operation on XXXX 2024.

Dated XXXXX 2024

The Common Seal of)
Worcestershire County Council was)
hereunto affixed in the presence of:-)

L.S.
Thomas Pollock
Assistant Director for
Legal and Governance

SCHEDULE

Lengths of roads in the Parish of Crowle, in the District of Wychavon, in the County of Worcestershire subject to the provisions of this Restricted Roads Order 2000.

C2078 (Church Road)	From a point 350 metres south of its junction with U42408 (Bredicot Lane) in a northerly direction to its junction with C2032 (Old Turnpike Road).
U42409 (Froxmere Road)	From its junction with C2078 (Church Road) in an easterly direction to its junction with U42410 Lower Crowle Road.
C2032 (Old Turnpike Road)	From a point 530 metres east of its junction with C2078 (Church Road) in a westerly direction to a point 250 metres west of its junction with C2158 (Netherwood Lane).
C2158 (Netherwood Lane)	From its junction with C2032 (Old Turnpike Road) for a distance of 400 metres in a north westerly direction.
UC42408 (Bredicot Lane)	From its junction with C2078 (Church Road) for a distance of 190 metres in a westerly direction.
UC42409 (Geneva Crescent)	For its entire length
UC42412 (Apple Tree Road)	For its entire length
UC42413 (Bramley Close)	For its entire length
UC42414 (Newton Close)	For its entire length
UC42415 (Laxton Close)	For its entire length
UC42416 (Froxmere Close)	For its entire length
UC42417 (1)	For its entire length
UC42417 (2)	For its entire length
UC42418 (School Lane)	For its entire length

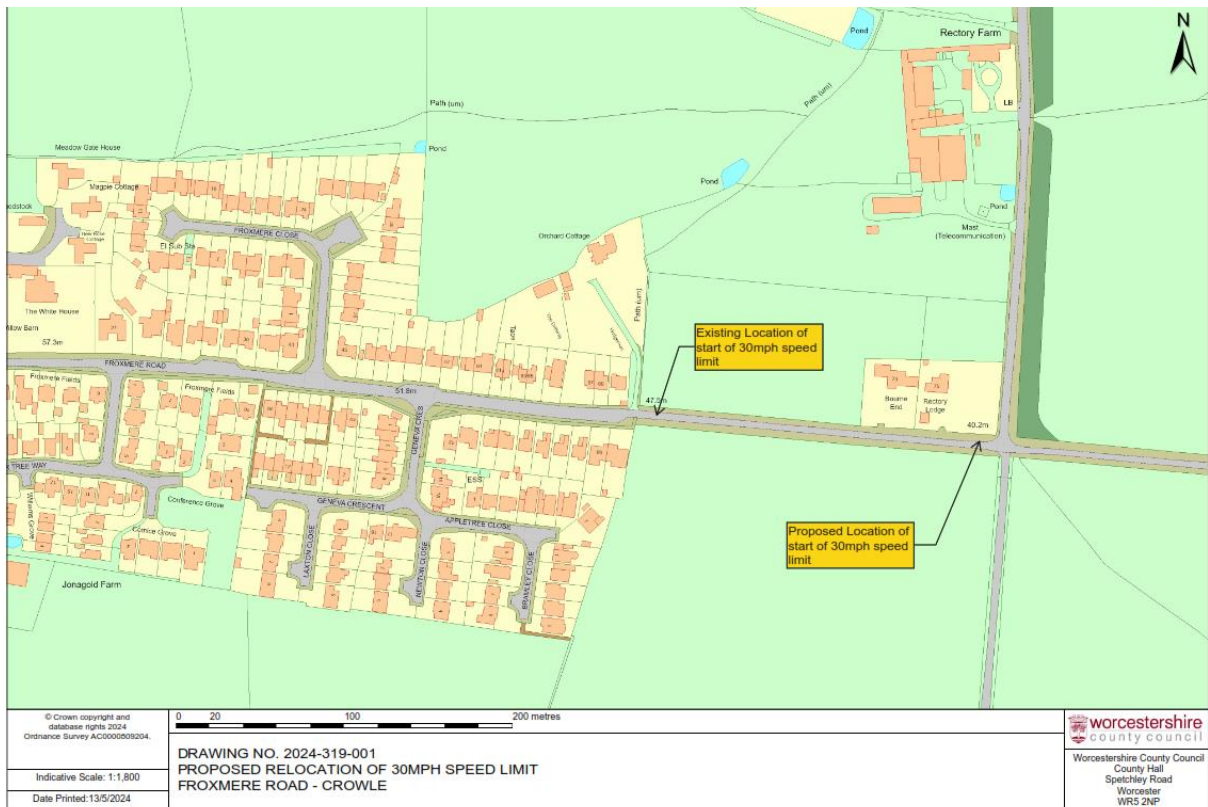
Map and plan of the area

Map of Various Roads, Crowle and the proposed extension to 30 mph speed limit zone to be implemented by the above order.

Description of the map

The map shows the proposed extension to 30 mph speed limit zone on Various Roads, Crowle:-

U42409 Froxmere Road – from its junction with C2078 Church Road in an easterly direction to its junction with U42410 Lower Crowle Road.



921

**ROAD TRAFFIC REGULATION ACT 1984
WORCESTERSHIRE COUNTY COUNCIL
(VARIOUS ROADS, CROWLE)
(RESTRICTED ROADS) ORDER 2000**

Worcestershire County Council in exercise of their powers under Section 82(2) and 83(2) to the Road Traffic Regulation Act 1984 (which said Act is hereinafter referred to as 'the Act of 1984') and all other powers them enabling in that behalf and after consultation with the Chief Officer of Police in accordance with Part III of Schedule 9 to the Act of 1984 hereby makes the following Order:-

1. That roads specified in the Schedule to this Order shall become restricted roads for the purpose of Section 81 of the Act of 1984;
2. This Order may be cited as Worcestershire County Council (Various Roads, Crowle) (Restricted Roads) Order 2000 and shall come into operation on 7 September 2000.

Dated 24 August 2000

The Common Seal of Worcestershire
County Council was hereunto
affixed in the presence of:-)



Admasse
PRINCIPAL SOLICITOR

SCHEDULE

Lengths of roads in the Parish of Crowle, in the District of Wychavon, in the County of Worcestershire subject to the provisions of this Restricted Roads Order 2000.

C2078 (Church Road)	From a point 350 metres south of its junction with U42408 (Bredicot Lane) in a northerly direction to its junction with C2032 (Old Turnpike Road).
U42409 (Froxmere Road)	From its junction with C2078 (Church Road) in an easterly direction to a point 175 metres east of its junction with U42409 (Geneva Crescent).
C2032 (Old Turnpike Road)	From a point 530 metres east of its junction with C2078 (Church Road) in a westerly direction to a point 250 metres west of its junction with C2158 (Netherwood Lane).
C2158 (Netherwood Lane)	From its junction with C2032 (Old Turnpike Road) for a distance of 400 metres in a north westerly direction.
UC42408 (Bredicot Lane)	From its junction with C2078 (Church Road) for a distance of 190 metres in a westerly direction.
UC42409 (Geneva Crescent)	For its entire length.
UC42412 (Apple Tree Road)	For its entire length.
UC42413 (Bramley Close)	For its entire length.
UC42414 (Newton Close)	For its entire length.
UC42415 (Laxton Close)	For its entire length.
UC42416 (Froxmere Close)	For its entire length.
UC42417 (1)	For its entire length.
UC42417 (2)	For its entire length.
UC42418 (School Lane)	For its entire length.