

WORCESTER CITY SECONDARY SCHOOL

Welcome to the public consultation event for the proposed new Secondary School In Worcester.

Thank you for attending and we really do appreciate all feedback that you provide prior to us finalising plans and documentation for a planning application in late Summer 2023.

In February 2021, the Cabinet gave approval to establish a New Build 600 place Secondary School in Worcester City to meet the increased demand for secondary school (Years 7 – 11) places.

The delivery of a new school in Worcester will ensure sufficient places across the City and ensure an element of surplus to ensure families have some choice; all children moving into the City during a school year can be offered provision within 20 days; and all children who want to access a place in their local community are able to do so, reducing travel times.

This site and the land to the west has been allocated for some form of development since 2016 and it has been assessed as meeting the needs of the new school and as such has been reallocated for a secondary school in the South Worcestershire Development Plan Review Document earmarked for full adoption this year.

WHO WILL OPERATE THE SCHOOL?

Oasis Community Learning.

Oasis Community Learning was established as a Multi-Academy Trust in 2004 with the vision to create "Exceptional Education at the Heart of the Community". We now run academies in five main regions throughout the UK, providing either Primary, Secondary or All-through education to over 32,000 young people.

'All of our academies are committed to providing a rich educational experience and ensuring that every child and young person has the opportunity to achieve at the highest level. Our ethos is integral to that provision. It is an expression of our character, a statement of who we are and therefore the lens through which we assess all we do. We are committed to a model of inclusion, equality, healthy relationships, hope and perseverance throughout all aspects of the life and culture of each academy community.' (Oasis Community Learning)



SCAN THIS QR CODE TO
TELL US YOUR THOUGHTS



WORCESTER CITY SECONDARY SCHOOL



SCAN HERE FOR SURVEY

LANDSCAPE

Sequential Test



Discounted Option A

Single building to the lower portion of the site, single entry/ egress into the car park and drop-off bays with the sports fields located centrally to the south west.

- Poor public facing and presence from Newtown Road
- Position on site inefficient due to levels
- Poor day lighting for class rooms
- Highway limitations having single entry/egress point

Discounted Option B

Proposed school building split into academic and community blocks and positioned to the north fronting onto Newtown Road. Dedicated vehicular entry and egress along Newtown Road serving drop-off and staff parking to the north east. Sports fields located to the higher ground in the south of the site.

- Impact on existing SuDS features
- Significant earth works due to building locations
- Sports fields impacting TPO tree to south



Discounted Option C

Proposed school building positioned to align to existing site contours. Dedicated vehicular entry and egress along Newtown Road servicing drop-off and staff parking to the north east. Sports pitches to the south parallel to the site boundary to retain the TPO tree

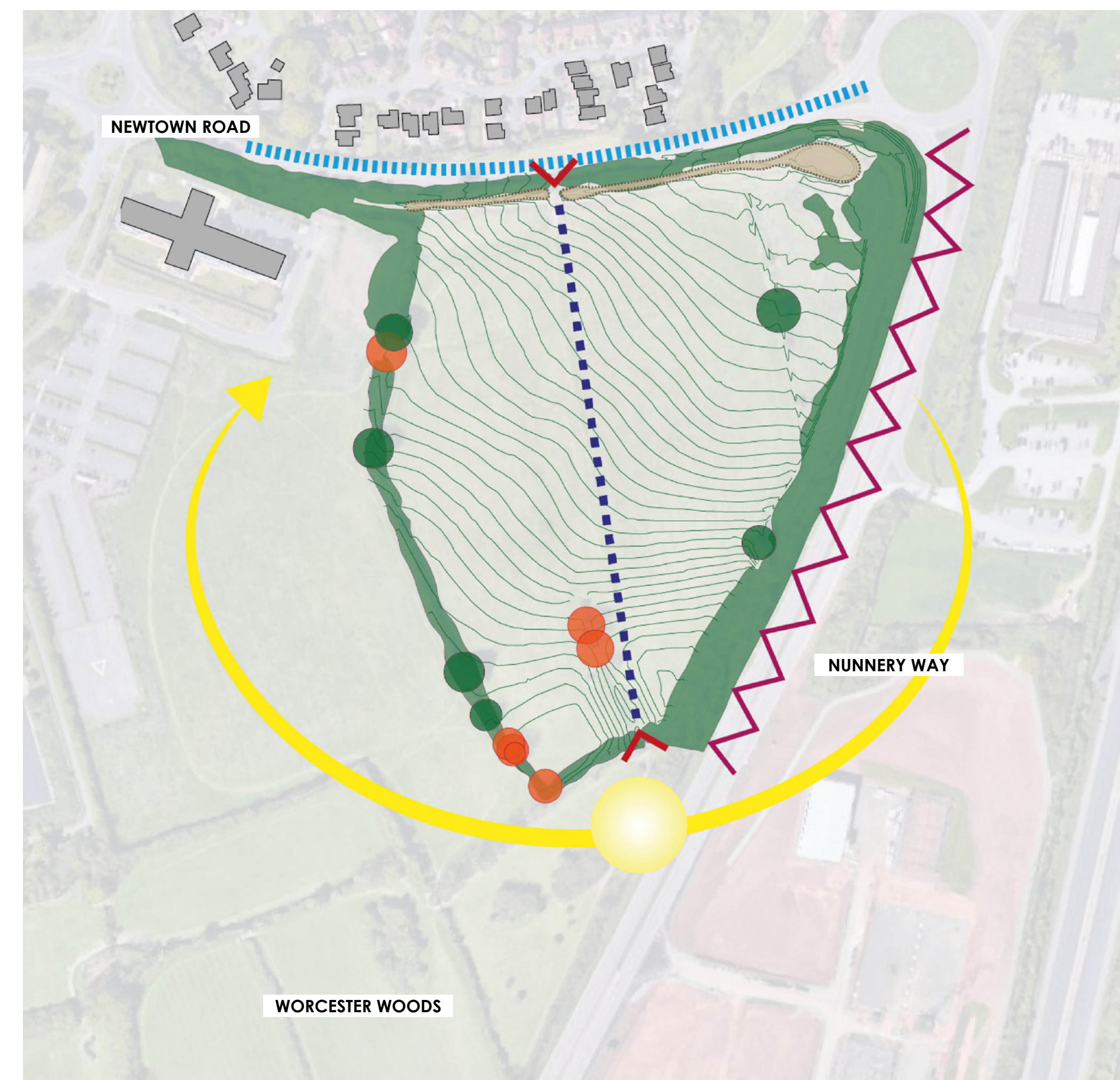
- Building form creates large volumes of excavation
- Large expanse of car park to north, limiting opportunity for SuDs
- Pinch point to west boundary and academic block
- Less presence to Newtown Road

Discounted Option D

Proposed school building formed with two longer blocks to better respond to site topography and position to the north. Drop-off and service/ deliveries remain off Newtown Road with staff parking accessed from Nunnery way. Additional pedestrian access from north east. Sports pitches to the south parallel to the site boundary to retain the TPO tree.

- Staff car park and access road is inefficient
- Reduced usable curriculum area
- Multiple entry points onerous to manage
- Site circulation becomes illogical and difficult to navigate
- Sports fields impacting TPO tree to south

Site Analysis



- ▲ ACCESS POINTS
- SUN PATH
- EXISTING ATTENUATION
- BRIDLEWAY
- BLUE ROUTE WITH TRAFFIC CONGESTION
- ▲ HIGH NOISE LEVEL
- TREES TO BE REMOVED FOR ARBORICULTURAL REQUIREMENT
- TPO TREES TO BE RETAINED

Concept Diagram



WORCESTER CITY SECONDARY SCHOOL

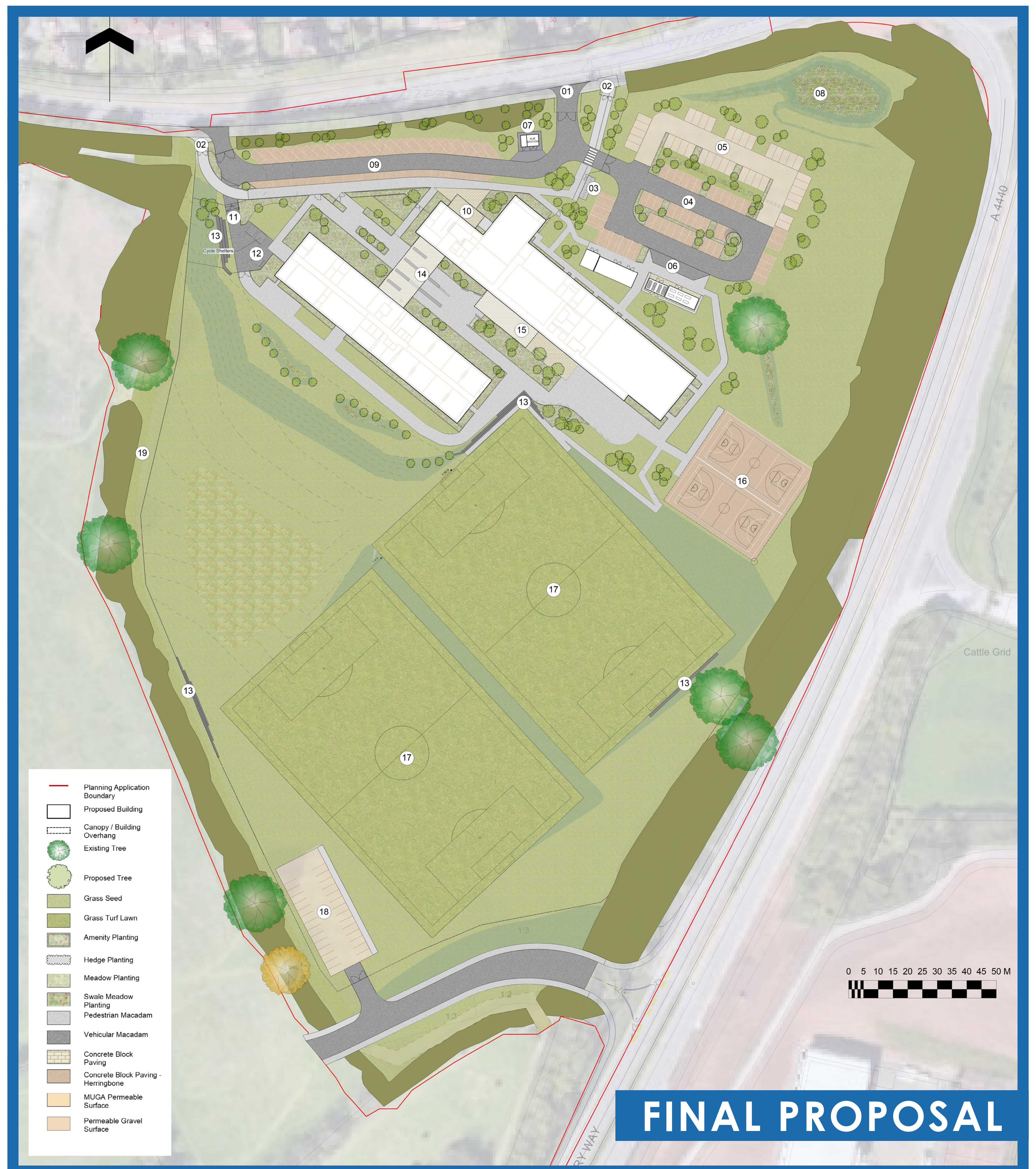


SCAN HERE
FOR SURVEY

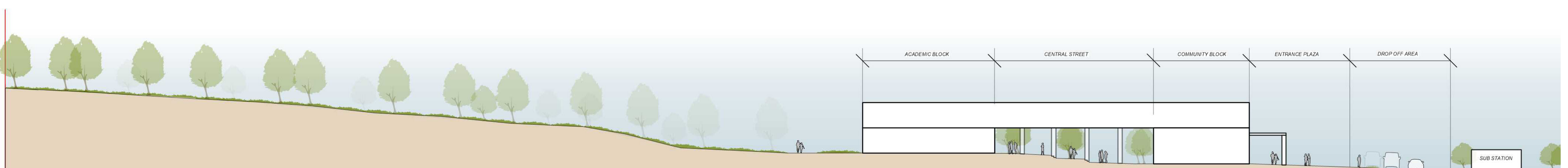
LANDSCAPE

Proposed Site Illustrative Masterplan

- 1 **Vehicular entrance point**
Access point from Newtown Road for Buses, Staff, Visitors and maintenance
- 2 **Pedestrian arrival route**
- 3 **Staff cycle shelter**
Secure cycle storage for staff only; 1 space per 5 FTE Staff
- 4 **Secure car park**
Authorised access for Staff, maintenance and delivery vehicles
- 5 **Permeable parking**
Landscape Sensitive surfacing for areas of the car park to reduce environmental impact
- 6 **Service and delivery pull-in area**
Delivery Maintenance Drop off area for direct access to kitchen, bin store and other services
- 7 **Sub station**
With parking area for maintenance
- 8 **Existing surface water attenuation feature to be retained**
- 9 **Drop off area**
Pupil drop-off and collection, providing visitor parking during the day
- 10 **Community building entrance**
Main entrance for staff and visitors
- 11 **Maintenance and emergency services vehicular access point**
- 12 **Student cycle shelters**
Secure Student Cycle parking for students; 60No. bike spaces
- 13 **Stepped retaining features**
Retaining structures stepped to reduce fall height and visual dominance in the site
- 14 **Bridge link**
Connecting the community and academic block at 1st floor
- 15 **External dining area**
Covered external dining
- 16 **Multi Use Games Area (MUGA)**
Providing netball, basketball and 5-a-side
- 17 **Football pitches**
Draining natural grass turf pitches for 11 a-side U17/U18
- 18 **Community use car park**
Gravel surface overflow car park for community/ sporting events
- 19 **Birdleway diverted to west of site**



Site Section



WORCESTER CITY SECONDARY SCHOOL



SCAN HERE FOR SURVEY

THE HIGHWAYS

Transport

The local catchment of the school is expected to result in a high proportion of children walking and cycling to school with only a small proportion driven. The development is expected to have a minimal impact on local roads. Detailed traffic surveys have been carried out in the local area and the impact of additional traffic will be fully assessed within a full Transport Assessment, which will be submitted as part of the planning application.

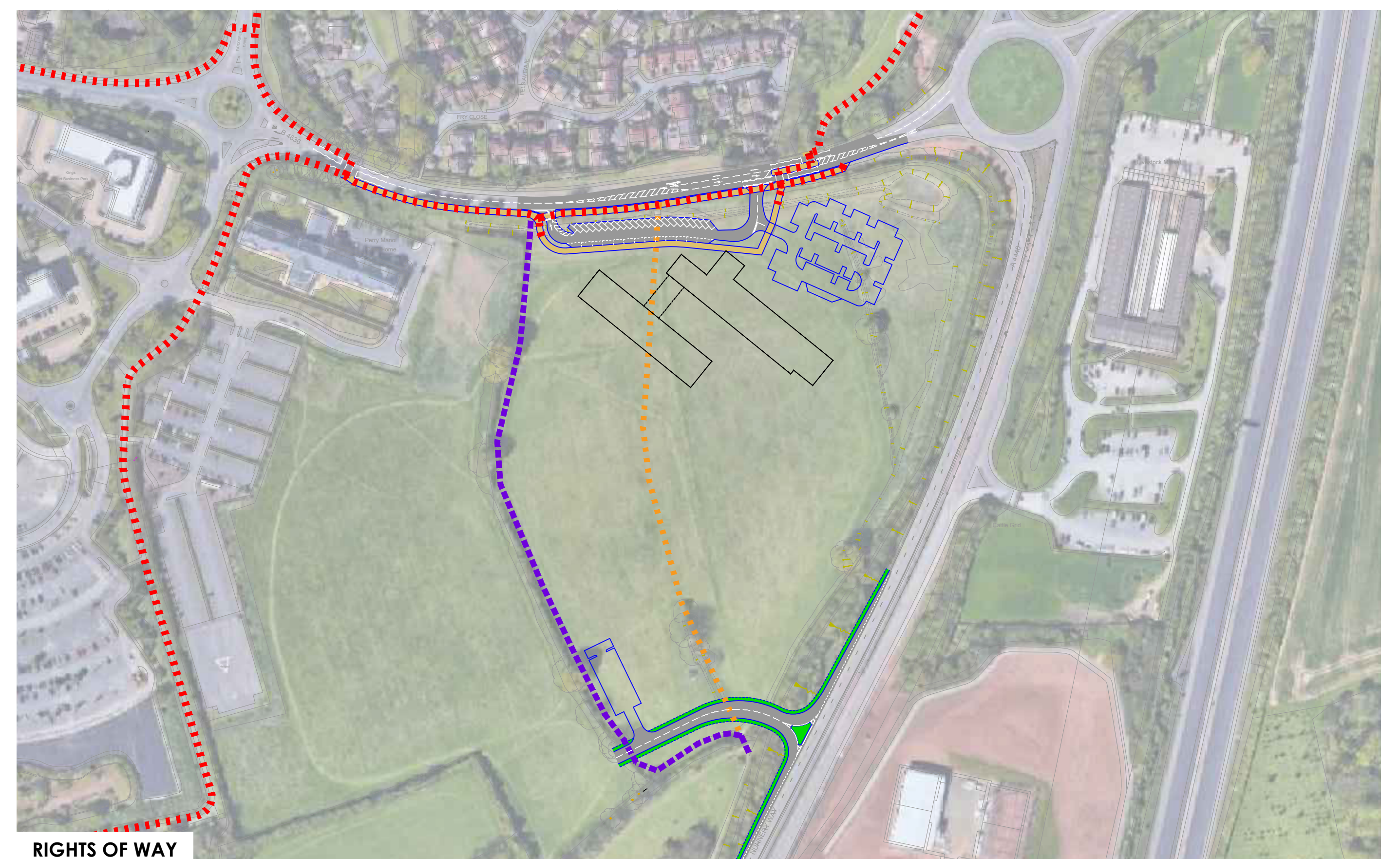
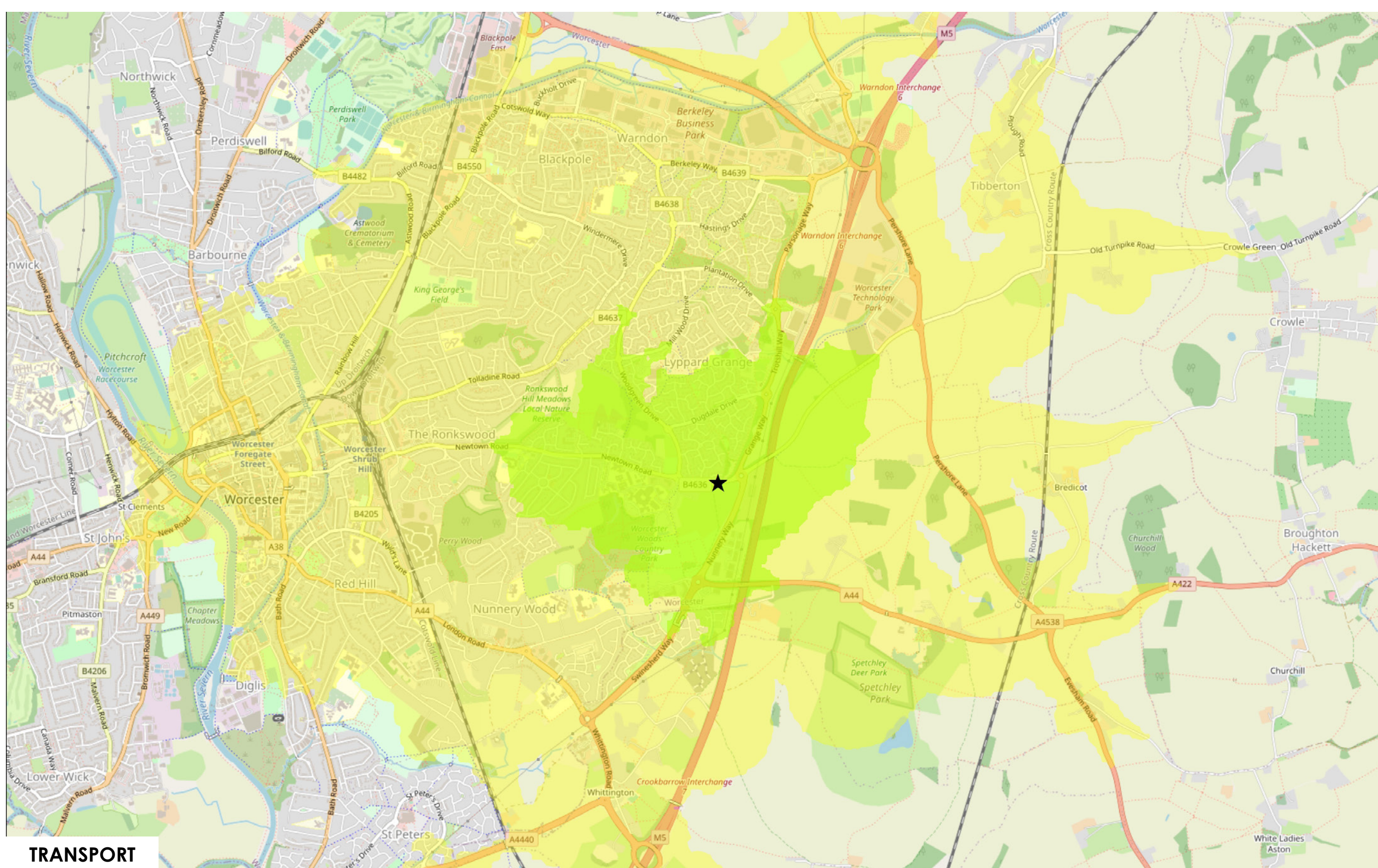
Rights of Way

The current brideway passes through the centre of the development site and will therefore require diversion to facilitate the construction of school buildings. This diversion will be submitted as a separate application. A route will be retained with a generous width following the western boundary of the field and therefore only a slight increase in the current route length. Alternative options were considered, though the western boundary best connects to the future network of active travel routes to the school and residential areas.

Access

Newtown Road provides the most safe and convenient access for children arriving at school. The improvements are designed to minimise disruption to through traffic, including routes to the hospital. Parents will be directed to use a drop off / pick up area within the development site in front of the school buildings.

An access from Nunnery Way will serve a community overflow car park, which can also be used to segregate public use from the wider school grounds. The access will also serve the remaining land to the west.



Air Quality

Detailed studies have begun and an Air Quality Assessment will be undertaken to assess potential local air quality effects as a result of the Proposed Development, the Air Quality Assessment will then consider whether any additional mitigation measures are required to reduce the impacts to an acceptable level.

Noise

Detailed assessments have begun to determine existing background noise levels to enable this to be compared to future plant and traffic noise levels. Provisionally, based on this current draft design impacts are not anticipated to be unacceptable, however a full assessment will be submitted with the planning application.

- ★ Indicative Site Access
- 20 Minute Walking Accessibility
- 20 Minute Cycling Accessibility
- Existing Bridleway
- Proposed Bridleway
- Active Travel Routes
- Soft Landscaped Verge

WORCESTER CITY SECONDARY SCHOOL



SCAN HERE FOR SURVEY

ECOLOGY & ARCHAEOLOGY

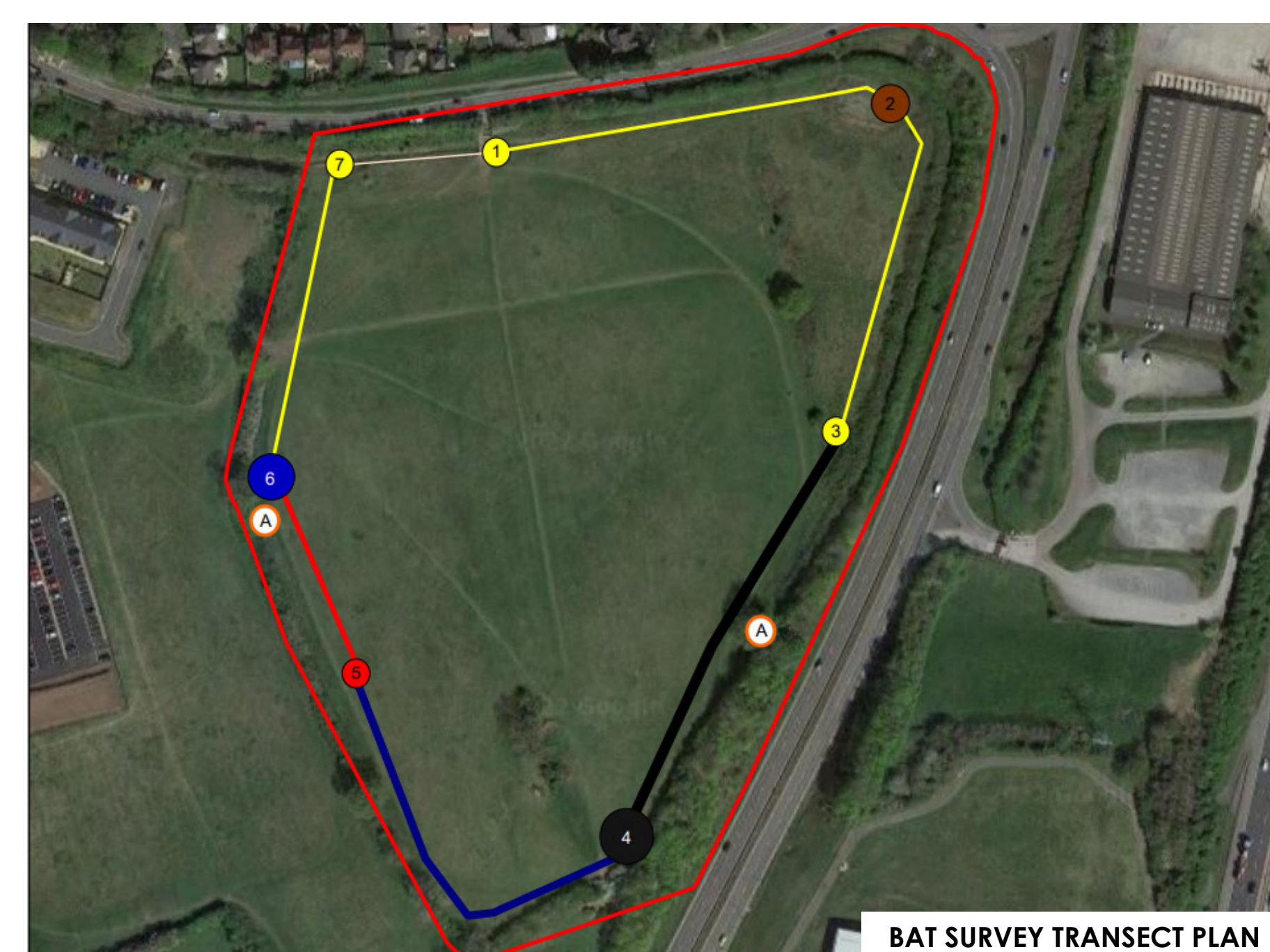
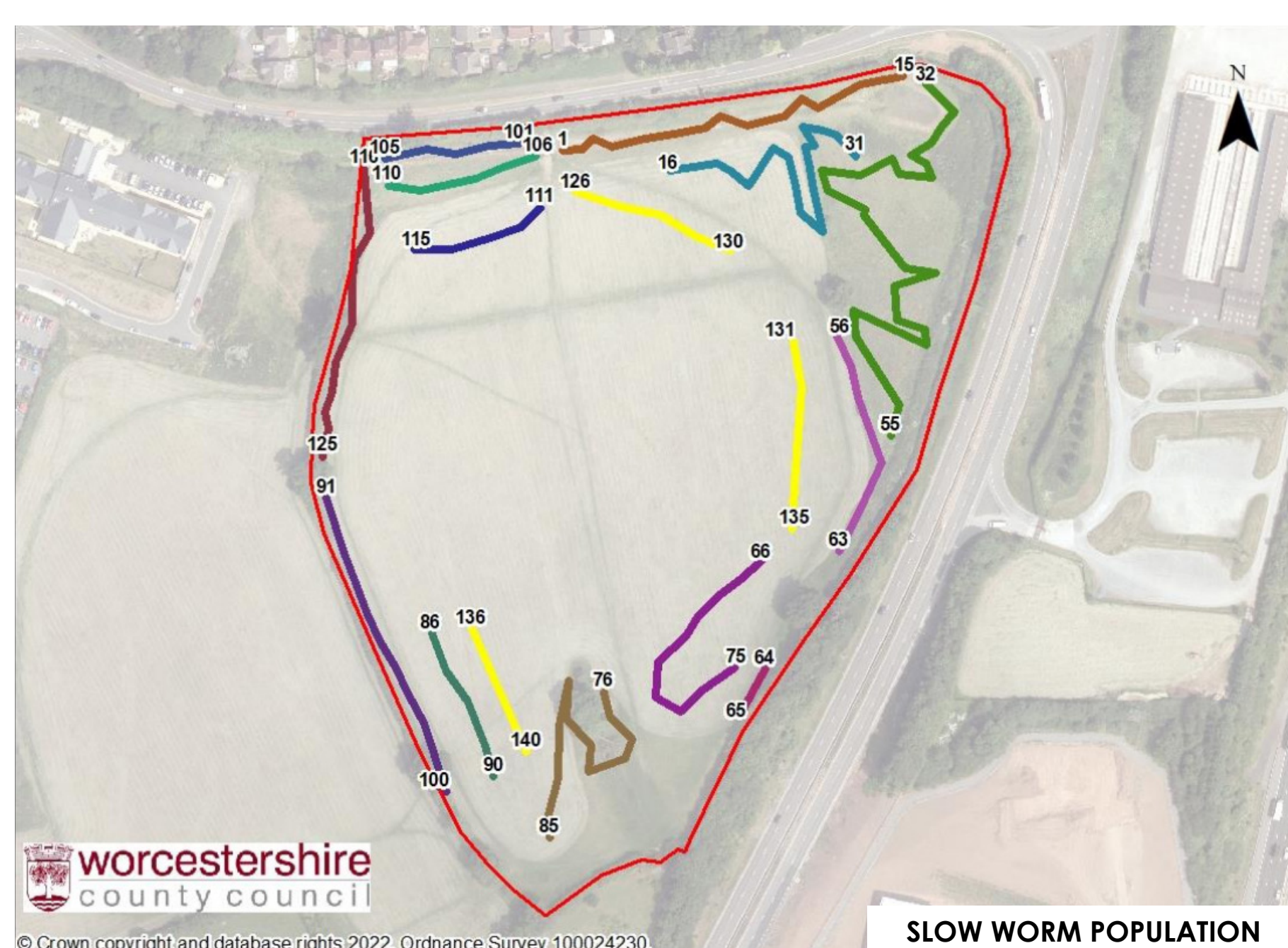
Habitats & Ecology

A number of ecological surveys have been undertaken at the Site including:

- A Preliminary Ecological Appraisal (July 2021)
- Wintering (February 2022) and Breeding Bird Surveys (July 2022);
- Bat Transect (2022) and Tree Climbing Survey (May 2022);
- Reptile Surveys including Slow Worm (2022).

A further Site survey was undertaken earlier this year to ensure older surveys remained up to date.

Whilst the site surveys assessed the location for a broad spectrum of protected species, the most notable species noted in Previous surveys are small populations of slow worms on Site. A separate reptile mitigation strategy will be prepared including enhancements of a receptor site and translocation exercise.

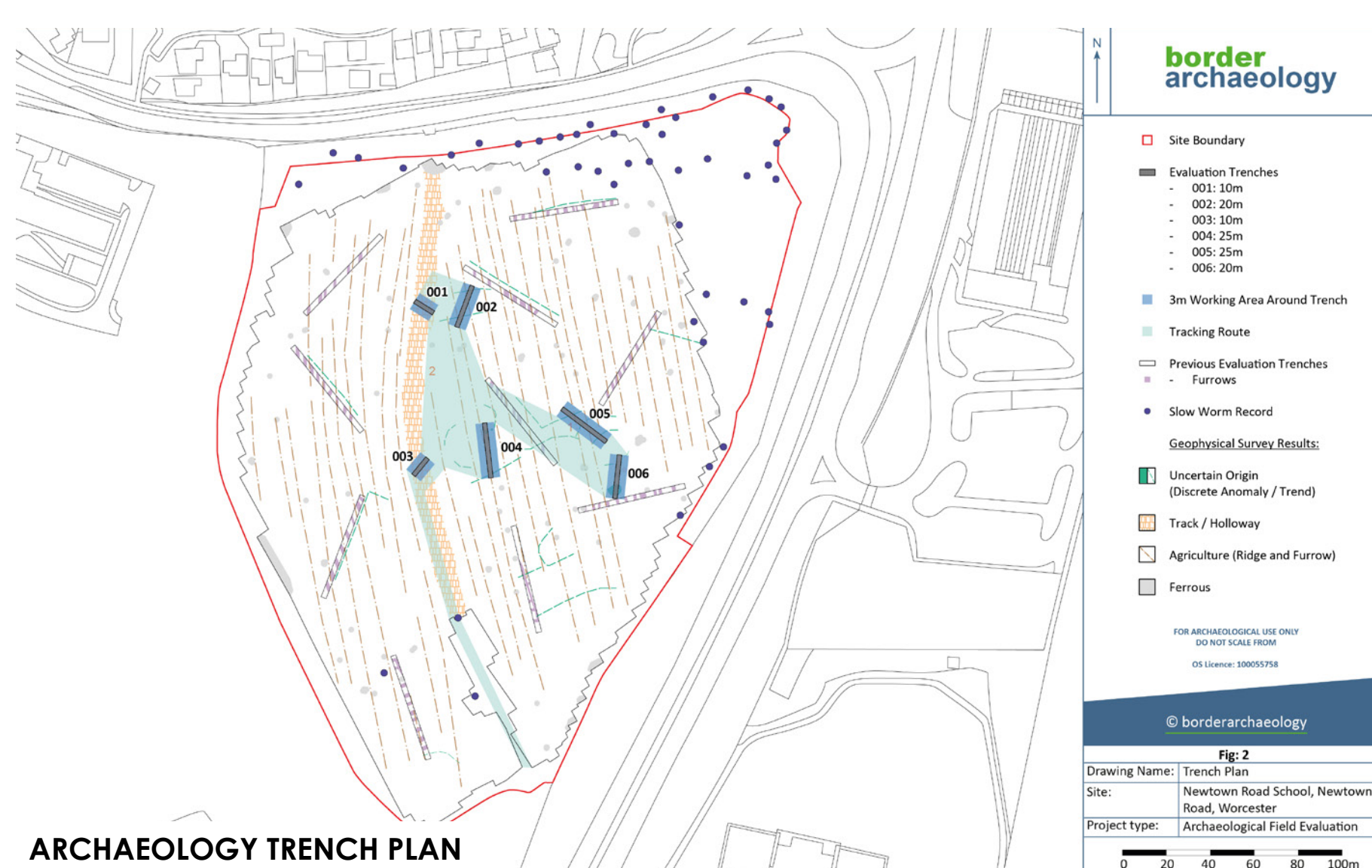


Archaeology

It is understood from a previous Archaeological Evaluation undertaken, that no prehistoric activity was recorded locally to the Site. No finds from Roman period associated with Worcester have been identified within the vicinity of the Site.

Any archaeological interest arises from a cropmark at the Southern end of the Site which was investigated as part of further investigation which identified small quantities of pottery, ceramic building material, clay pipe and metal artefacts. A single sherd of 1st to 2nd century Severn Valley ware was recovered and the remainder of material was post-medieval or modern in date.

Some further investigation work is planned to take place as can be seen on the plan. Findings from this investigation would be provided as part of the submission documents.



CONSTRUCTION



Zones with reptile fencing installed facilitating slow worm translocation works to offsite location by Ecology team.



Further Ecology Works, Bridleway Relocation works and site compound set up including site hoarding / fencing.



School building, sports pitches and landscaping site works area.
Newtown Road highway widening, permanent entrance / exit and pedestrian improvement works.
Nuntery Way lighting, new junction and adjacent field access works

GRAHAM Construction

- Will develop a Construction Traffic Management Plan as part of our overall Construction Phase Plan which will be approved as part of the planning permission and maintained throughout the works
- Will ensure timed deliveries area outside of peak hours with a designated pull off area for construction traffic, provision of staff / operative parking and a dedicated gateman to manage site traffic and minimise disruption to Newtown Road
- Are 'Considerate Constructors' and will seek to minimise disruption to the surrounding area. Noise and dust management will be part of the CPP to minimise disturbance to local residents and neighbours
- The site will have a fully secure boundary with CCTV to maintain safety throughout the duration of the works
- Will develop projects with local schools and community groups as part of our commitment to Social Value
- Will encourage liaison with the local community, with regular on-site consultation drop in meetings and information drops to advise on works progress.

| | 2023 | | | 2024 | | | | 2025 | | | | 2026 | | | |
|--------------------------------------|------|----|----|------|----|----|----|------|----|----|----|------|----|----|----|
| | Q2 | Q3 | Q4 | Q1 | Q2 | Q3 | Q4 | Q1 | Q2 | Q3 | Q4 | Q1 | Q2 | Q3 | Q4 |
| Public Consultation - June 2023 | | | | | | | | | | | | | | | |
| Planning Application Process | | | | | | | | | | | | | | | |
| Slow Worm Translocation | | | | | | | | | | | | | | | |
| Site Set-up / Enabling Works | | | | | | | | | | | | | | | |
| School & Highways Construction Works | | | | | | | | | | | | | | | |
| School Open - September 2026 | | | | | | | | | | | | | | | |



WORCESTER CITY SECONDARY SCHOOL



SCAN HERE
FOR SURVEY

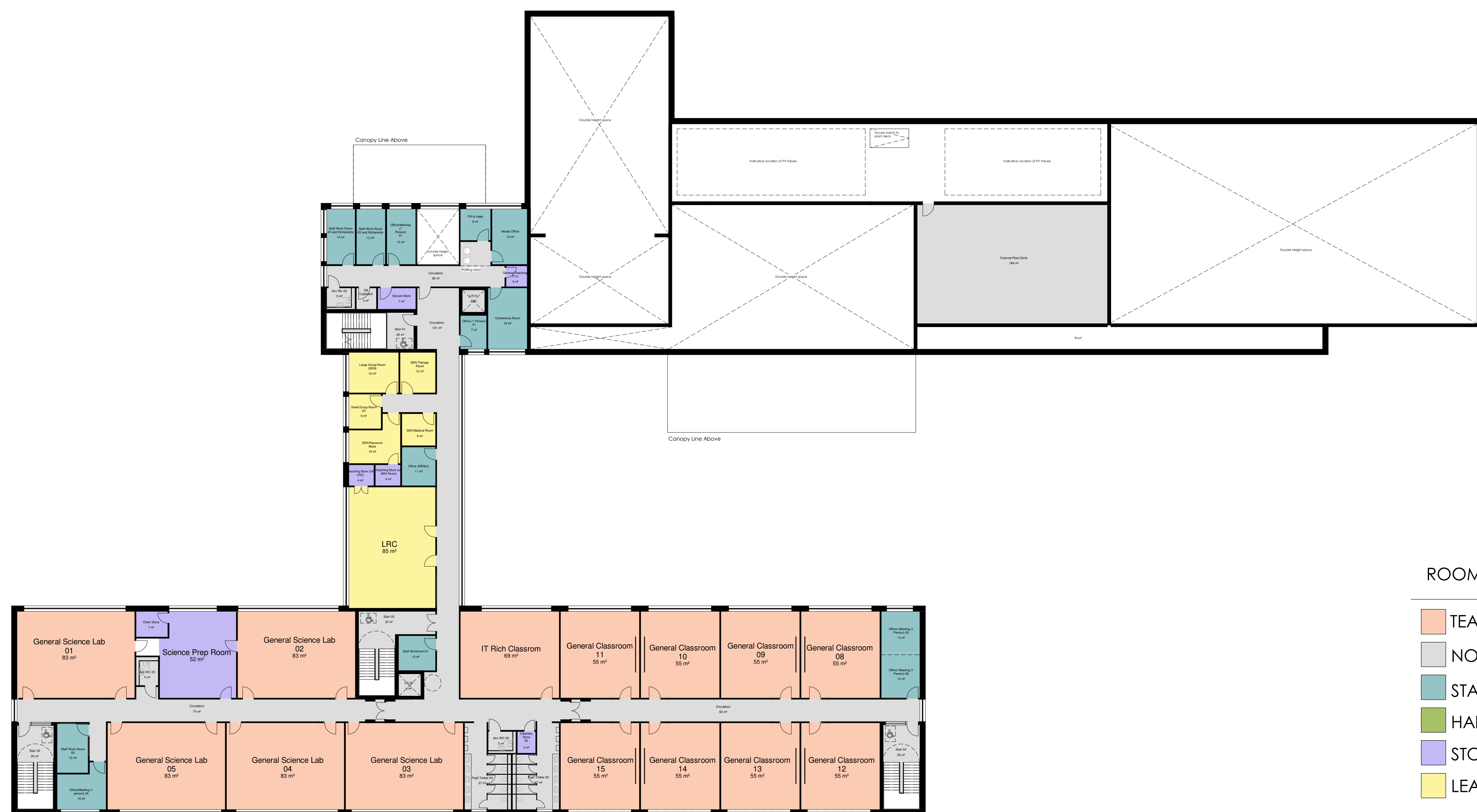
ARCHITECTURAL PLANS

Level 00



- ROOM KEY
- TEACHING SPACES
 - NON NET AREA
 - STAFF AND ADMIN
 - HALLS/ DINING AND PE
 - STORAGE
 - LEARNING RESOURCES

Level 01



- ROOM KEY
- TEACHING SPACES
 - NON NET AREA
 - STAFF AND ADMIN
 - HALLS/ DINING AND PE
 - STORAGE
 - LEARNING RESOURCES

WORCESTER CITY SECONDARY SCHOOL



SCAN HERE
FOR SURVEY

ARCHITECTURAL CONCEPT

ARTIST'S IMPRESSIONS OF BUILDING FORM AND EXTERNAL LANDSCAPED AREAS

